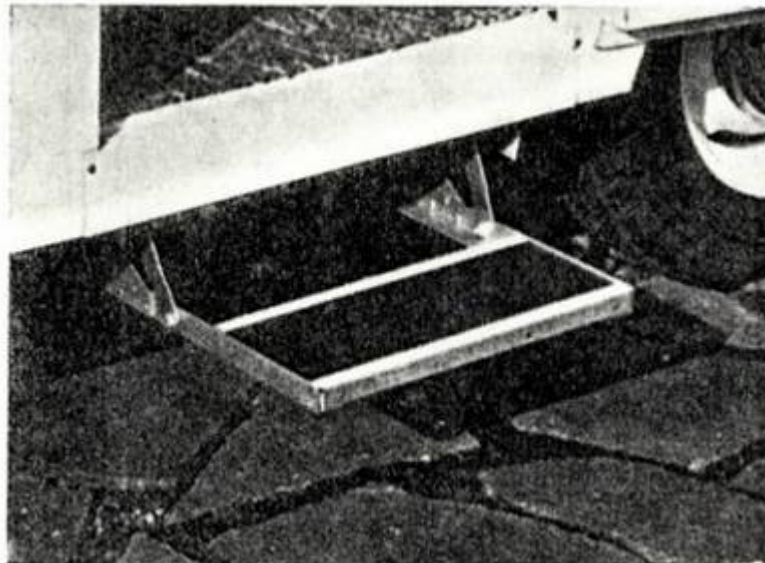


THE RETRACTABLE CARAVAN STEP

Patent Applied For



This step, which is a new design, is easy to fit, simple to operate, combines rigidity with strength, yet is only 6¾ lbs in weight.

All the moving joints are made with bolts and self-locking nuts, so that it is relatively easy to free the linkage should it become seized through neglect of lubrication. Except for the tread board, which is wood covered with ribbed rubber and edged with aluminium, the step is made of aluminium painted steel.

Projection below the top of the mounting angles is 5¾ inches and the fore and aft movement of the tread board is 7⅝ inches.

“The Caravan” magazine, in their October 1964 issue, quote; “The whole design is well thought out”.

FITTING INSTRUCTIONS

Materials required for fixing:

4 - ¼ inch diameter steel bolts of a length equal to the thickness of the floor, plus thickness of any wood battens, and plus ½ inch allowance for nuts.

4 - Large diameter washers (about 1½ inch diameter).

4 - ¼ inch diameter nuts

Wood battens to suit (if required)

On some caravans it will be possible to bolt the step directly to the floor, but generally it will be mounted with wood battens between the mounting angles and the floor. The thickness of the battens will vary according to the individual requirements of the owner and the limitations of the caravan chassis or underfloor structure. Even if the step is mounted below a chassis with 3 inch deep members, the projection below the floor is only 7⅝ inches.

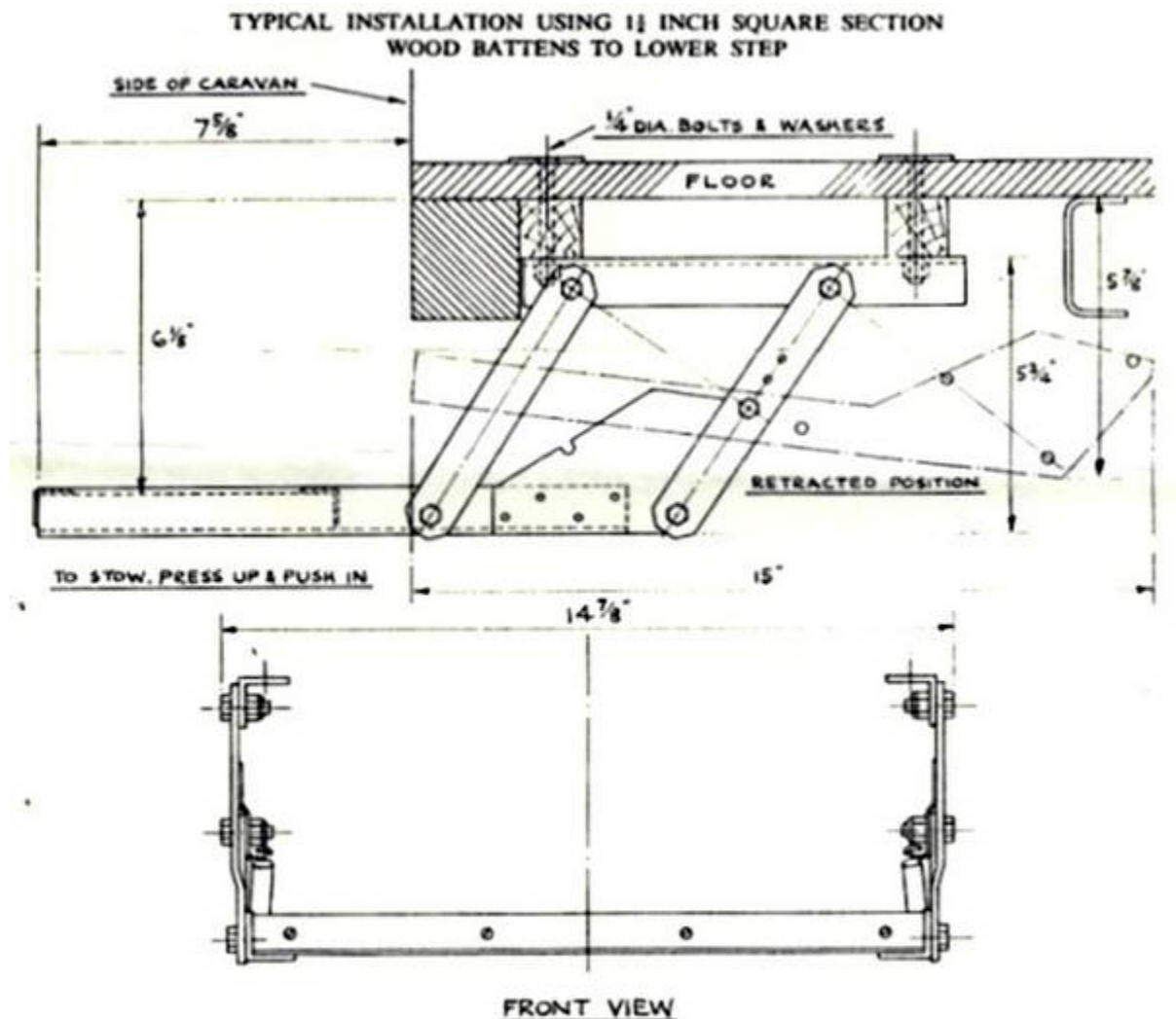
Having decided on the longitudinal position of the step, then place it upside down in the doorway, with the outer edge of the tread board in line with the side of the caravan and mark off the position of the fixing holes for drilling.

The wood battens, which should preferably run longitudinally on the caravan and should not be less than 16 inches long, should now be drilled at the same spacing as the holes in the floor. ¼ inch diameter bolts with large steel washers under the heads, can now be pushed down from inside the caravan, and the battens and step threaded on from the underside, then put on the nuts and tighten up.

It is now ready for use.

To operate, press up the outer edge of the tread board and pull out, the springs will automatically locate and lock it. Press up and push in to stow – again locking is automatic.

IMPORTANT – Keep the moving joints greased or oiled.



PRICE £4 10s. 0d. (including carriage)

ALL PURPOSE EQUIPMENTS (Chester) LTD.

8 QUEEN'S DRIVE, QUEEN'S PARK, CHESTER