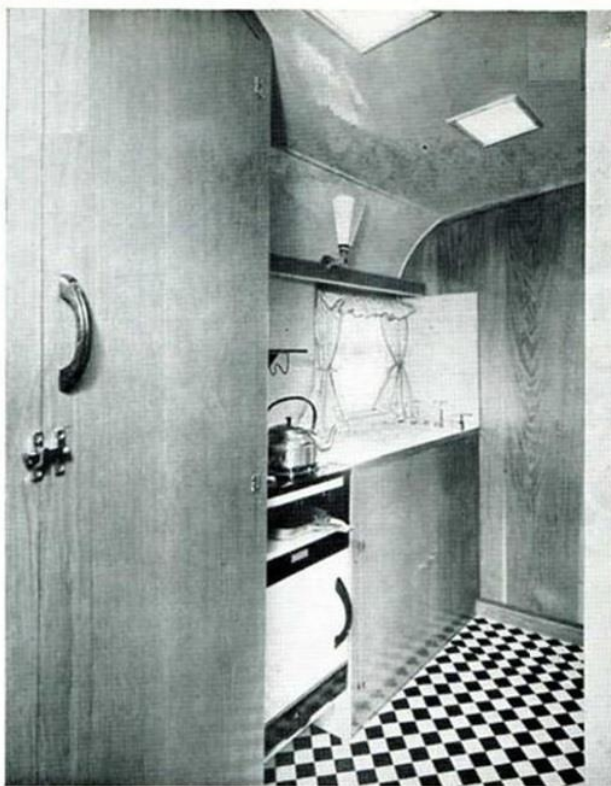


*The 1950 Thomson "Solway"*





Above: Lounge, with table in position looking towards rear. Access to kitchen and second outer door are shown with toilet room beyond.



Kitchen: Showing cooker and sink. Toilet room door on left.

## The Thomson "Solway"

**E**XPERIENCE gained in caravan production in the past forty years has enabled the manufacturers of the *Solway* to offer all the personal requirements of comfort in a more attractive manner than yet presented. The caravan is of maximum permitted size and provides three separate rooms: a spacious lounge, a bedroom and a bathroom cum kitchen, all fully furnished and equipped with the appropriate services. It is architect-planned to give the comforts of home with the added advantages that it is mobile, it is furnished and its purchase price comes within range of the most discerning home-seeker. Heating is provided for by a true house-type open fireplace with water tank which supplies hot water to kitchen and bath. A generously upholstered bed settee is installed to seat three, which can be drawn up to the fire and at night-time this converts to a luxurious double bed. Panelled walls in the lounge and furniture finished in oak give this apartment a dignity of character seldom found in the more expensive houses of today.

The front bedroom is entirely separate from the lounge and, like the kitchen, has its own doorway. The apartment can sleep three on occasions, but normally is fitted to accommodate two on a double bed or on two single beds, one of which folds into the wall giving clear floor space suitable for a playroom for children. Like the lounge this room is panelled in oak.

In the kitchen the interests of the modern housewife are catered for, and her duties in this part must surely be pleasant in such delightfully compact surroundings. Gas cooker, sink and draining board, with hot and cold running water, ventilated food larder, storage lockers, shelves, are all to hand just where they are required. Gas and electric lights, a roof ventilator and opening window all lend an air of spaciousness without detracting from the planned degree of convenience.

The caravan is insulated throughout by FIBREGLASS and is externally panelled on walls with aluminium. There are four roof ventilators, and all apartments have opening windows. Gas and electric lighting points are in each room, and two electric supply plugs are installed. Mains current can be used and a fuse-switch box is installed.

**MAXIMUM ACCOMMODATION**—Three rooms—lounge, bedroom, kitchen/bathroom. Four-five berth. One double bed and two singles or two double beds and one single.

**ALUMINIUM EXTERIOR PANELLING**—For strength and durability with aluminium mouldings and polished waistrails, roof double panelled with hardboard and covered with cotton duck.

**FIBREGLASS INSULATION**—A material which has proved eminently satisfactory in the field of change of temperature insulation.

**OAK-FACED FURNITURE**—Table and chairs. Lounge, wardrobes, sideboard and bedroom cabinet hand polished in oak. A comfy house-type settee and carpets are installed in the lounge.

**OPEN FIRE**—Incorporating hot water tank. Alternatively, "TAYCO" enclosed solid fuel stove and water tank.

**SEPARATE KITCHEN**—With full gas cooker, hot and cold water supply and ventilated larder. The kitchen has the second access door.

**LIGHTING**—Mains electricity and gas.

**STEEL CHASSIS**—Patent ball coupling for rigidity and safety, with jack legs and jockey wheel.

**PLATED METAL-FRAMED WINDOWS**—Each apartment is installed with opening windows.

**PRICE (ex works) - £675**

### DIMENSIONS

Body length - - - - -	22 ft.	Headroom - max.	6 ft. 6 in., min.	6 ft.
Overall length - - - - -	25 ft. 6 in.	Weight as delivered - - -	38 cwt.	
.. width - - - - -	7 ft. 6 in.	Towing coupling height - - -	21 in.	
.. height - - - - -	9 ft. 9 in.	Water storage capacity - - -	18 gallons	

Delivered weight includes gas cylinder, table, chairs, bed settee, bath and toilet unit

*NOTE*—Every effort is made to conform to this specification, but Manufacturers reserve right to alter this as necessary.

EVERYWHERE THERE'S



A THOMSON CARAVAN

Manufactured in Scotland's largest caravan factory. The firm has over 40 years' specialised experience.

Built in Scotland by

Sold and serviced by recognised agents and dealers throughout the British Isles and the Continent.

**THOMSONS (CARRON) LTD., FALKIRK**

(On the National Caravan Council Ltd.) (Approved Manufacturers)

SCOTLAND

Telephones: LARBERT 393-394