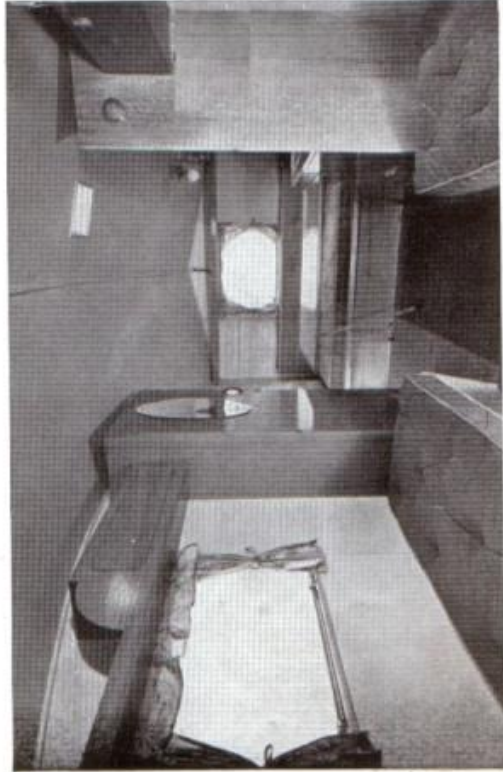


The Thomson '53 Almond



The rear of the ALMOND showing Single Beds, Gas Cooker and Sink Unit opposite doorway

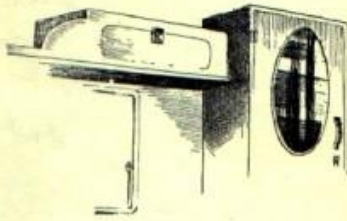


Front Apartment of the ALMOND showing Double Bed-Settee with Locker Space underneath and second Mounting for Table

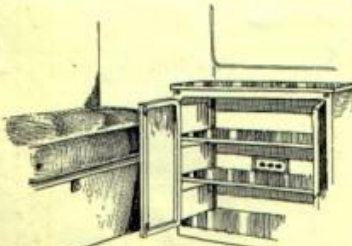


The Thomson Almond

The Thomson '52 Almond



The spacious roof locker illustrated above, adjoining the wardrobe, is one of three situated in convenient position in the caravan.



Ventilated food locker, shown above, is placed between the two single beds in the rear of the caravan. The front of this cabinet serves as a mounting for the table.

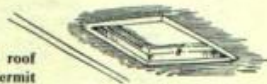


Gas cooking installation which provides for storage of cooking utensils in built-in cabinet, is adjacent to the sink shown below.



Hinged draining board cover to sink provides additional facility for food preparation.

Two opening roof ventilators permit generous air circulation.



STATELY and handsome in the country or by the sea, the ALMOND is the Caravanners' ideal. At home in the mountains—on the plains—in the snows of the north, or the heat of the African veldt—a worthy successor to all the famous THOMSON Caravans, travellers of the world's highways.

Just think of these points :—

Manoeuvrability—Can be towed by 10 H.P. car.

Four berths, one double and two single beds.

Aluminium panelling, for strength, durability and lightness. Polished waist rail with all exterior mouldings of aluminium set in sealer.

Oak-faced furniture, with superior hand-polished finish.

Fibreglass insulation to walls, ends and roof, to keep you cool in summer and warm in winter. Roof double panelled with hard-board and outer skin of cotton duck.

Gas cooking and lighting, with cabinet cooker and platerack.

Two apartments, with folding partition doors.

Five chromium-plated metal-framed windows.

All steel chassis, with jacklegs and ball coupling.

Large wardrobe, plus nine really capacious lockers.

Tongued and Grooved Floor, covered with linoleum and carpet.

Your comfort is assured—two large single beds in the rear apartment transform this part into a real bedroom for the younger members of the family, although there's no reason why the adults should not enjoy this comfort—there's room for all. In this rear apartment there's the table mounting on the front of the food larder and, with the table in position, dining space for six. Three opening windows and an opening roof ventilator ensure the maximum comfort, and for storage, there are two full-length bed lockers with roof lockers overhead.

The front apartment offers sleeping and lounging accommodation on a full-width bed-settee—a joy in the daytime and a luxury at night. Maximum ventilation is provided through two opening windows and roof vent over cooker. The kitchen installation is placed on the offside of the caravan opposite the door and comprises wash basin with draining board top, gas cooker and supply cylinder storage. Cooking utensils are provided and stored under the cooker. Further locker space is available in the gas cylinder storage locker which is ventilated, and an alternative mounting for the table is fitted on the front of the cabinet. Opposite the cooker and next the door, the wardrobe is fitted to hang coats and larger items of clothing.

Price (ex works) £385 + £2 18 0d. Purchase Tax

Weight, as delivered	- - - - -	17 cwt.
Height, overall	- - - - -	8 ft. 4 in.
Length, overall	- - - - -	17 ft. (14 ft. body)
Width, overall	- - - - -	7 ft.
Headroom, maximum	- - - - -	6 ft. 6 in.
Towing coupling attachment holes—	2 × 1 1/8 in. at 3 1/2 in. centres at 16 in. from road surface.	

NOTE—Every effort is made to conform to this specification, but Manufacturers reserve right to alter this as necessary.

EVERYWHERE THERE'S



A THOMSON CARAVAN

Built in Scotland by

THOMSONS (CARRON) LTD., FALKIRK

(On the National Caravan Council List of Approved Manufacturers)

Telephones : LARBERT 393 - 394