



Above : Lounge of "Braemar" with access to kitchen (left) and bathroom (right).

←Kitchen : Showing sink installation, gas cooker and storage accommodation.

Bathroom : With wash basin, → perspex bath and chemical toilet.



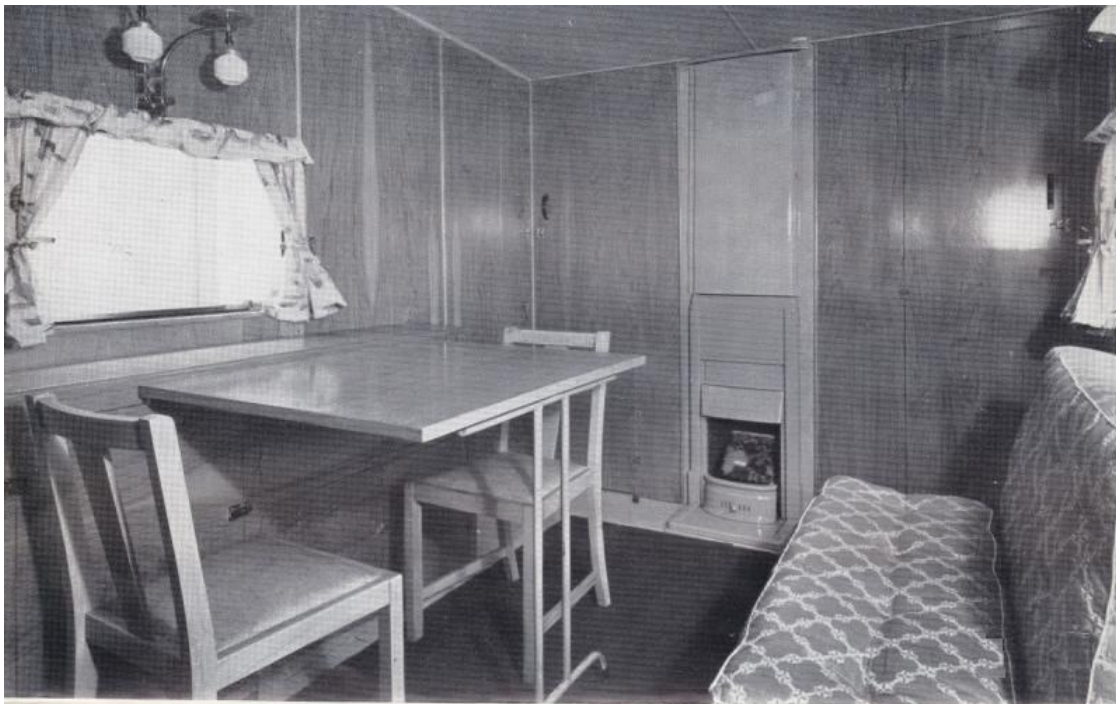
Lounge : Showing slideboard, double fold-away bed and settee



From Apartment : Showing double bed settee, wardrobe and cabinet

The Thomson "Braemar"





The Thomson '52 "Braemar"

EXPERIENCE gained in caravan production in the past has enabled the manufacturers of the *Braemar* to offer all the personal requirements of comfort in the most attractive manner yet presented. The caravan is of maximum permitted size and provides four separate rooms: a spacious lounge, a bedroom, a bathroom and kitchen, all fully furnished and equipped with the appropriate services. It is architect-planned to give the comforts expected of home with the added advantages that it is mobile, it is furnished and its purchase price comes within range of the most discerning home-seeker. The lounge has the popular space saving fold-away double bed, and heating is provided for by a true house-type open fireplace with water tank which supplies hot water to kitchen and bathroom. A generously upholstered settee is installed to seat three, which can be drawn up to the fire. Panelled walls in the lounge and furniture finished in oak give this apartment a dignity of character seldom found in the more expensive houses of today.

The front bedroom is entirely separate from the lounge and, like the kitchen and bathroom, has its own doorway. The apartment can sleep three on occasions, but normally is fitted to accommodate two on a double bed or on two single beds, one of which folds into the wall giving clear floor space suitable for a playroom for children.

In the kitchen the interests of the modern housewife are catered for, and her duties in this part must surely be pleasant in such delightfully compact surroundings. Gas cooker, sink and draining board, with hot and cold running water, ventilated food larder, storage lockers, shelves, ironing board, are all to hand just when they are required. Gas and electric lights, a roof ventilator and opening window all lend an air of spaciousness without detracting from the planned degree of convenience.

Separate from the kitchen and the two other rooms, the bathroom completes the rear of the caravan. The wash basin is installed over the bath, which itself folds up when not in use, and under the window at the rear, the toilet unit is mounted. Full hot and cold water system is laid on and bath and wash basin drain off to the outside. Toilet lockers and mirror are fitted and lighting and ventilation are generous. The caravan is insulated throughout by FIBREGLASS and is externally panelled on walls with aluminium. There are four roof ventilators, and all apartments have opening windows. Gas and electric lighting points are in each room, and two electric supply plugs are installed. Mains current can be used and a fuse-switch box is installed.

MAXIMUM ACCOMMODATION—Four rooms—lounge, bedroom, kitchen, bathroom. Four/five berth. One double bed and two singles or two double beds and one single.

ALUMINIUM EXTERIOR PANNELLING—For strength and durability with aluminium mouldings and polished waistrails, roof double panelled with hardboard and covered with cotton duck.

FIBREGLASS INSULATION—A material which has proved eminently satisfactory in the field of change of temperature insulation.

OAK-FACED FURNITURE—Table and chairs. Lounge, wardrobes, sideboard and bedroom cabinet hand polished in oak. A comfy settee and carpets are installed in the lounge.

OPEN FIRE—Incorporating hot water tank. Alternatively, "TAYCO" enclosed solid fuel stove and water tank.

SEPARATE KITCHEN—With full gas cooker, hot and cold water supply, ventilated larder and ironing board. The kitchen has the second access door.

SELF-CONTAINED BATHROOM—With hot and cold water, wash basin, bath and toilet.

LIGHTING—Mains electricity and gas.

STEEL CHASSIS—Patent ball coupling for rigidity and safety, with jack legs and jockey wheel by Brockhouse.

PLATED METAL-FRAMED WINDOWS—Each apartment is installed with opening windows.

Price (ex works) £750 + £6 5 0d. Purchase Tax

DIMENSIONS

Body length - - - - -	22 ft.	Headroom - max. 6 ft. 6 in., min. 6 ft.
Overall length - - - - -	25 ft. 6 in.	Weight as delivered - - - - -
width - - - - -	7 ft. 6 in.	Towing coupling height - - - - -
.. height - - - - -	9 ft. 9 in.	Water storage capacity - - - - -
Delivered weight includes gas cylinder, table, chairs, bedroom cabinet, bath and toilet		38 cwt.
		21 in.
		18 gallons

NOTE—Every effort is made to conform to this specification, but Manufacturers reserve right to alter this as necessary.

EVERYWHERE THERE'S  A THOMSON CARAVAN

Built in Scotland by

THOMSONS (CARAVANS) LTD. FALKIRK