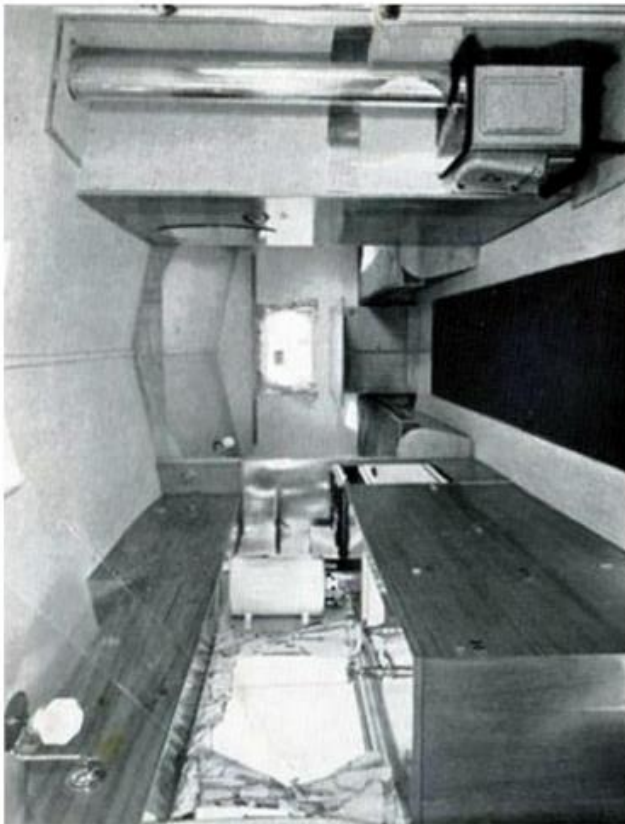
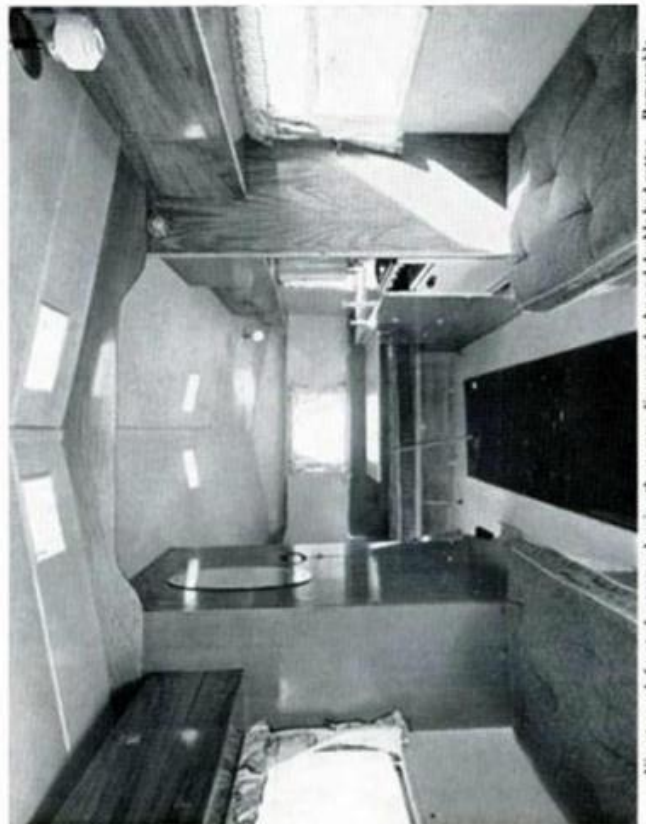




1952 Clyde



The rear view of the "Clyde" showing the spacious accommodation for rear bedroom and the neat lines of the accessible kitchen unit with slow combustion stove opposite.



View forwards from front of caravan showing the commodious wardrobe and double bed settee. Removable table is shown in alternative position.

# The Thomson Clyde Caravan



Kitchen installation showing cooker with oven and platerack, gas-operated water heater and capacious lockers.



Sink Unit showing cold water tap, water pump and water heater.



Slow Combustion Solid Fuel Stove is situated immediately inside doorway and adjacent to large wardrobe.

**A**LTHOUGH the 14 ft. *Almond* Caravan is ideally suited for use with lighter cars, the Thomson *Clyde*—an entirely new model—is designed for those whose habits are none the less mobile, but who wish to go along in a bigger way.

Suitable for use in conjunction with cars in the medium H.P. range this delightful 17 ft. model provides style and comfort on a more spacious scale with these outstanding features:—

- FOUR BERTHS**—One double bed settee and two single beds.
- ALUMINIUM PANNELLING**, for strength, rigidity and lightness. Polished waist rail and all exterior mouldings set in scaler.
- OAK-FACED FURNITURE**, with hand polished finish.
- FIBREGLASS INSULATION** to roof, ends and walls. Roof double panelled with hardboard and covered in cotton duck.
- ALL STEEL CHASSIS**, with ball coupling, jockey wheel and jack legs by Brockhouse.
- TWO APARTMENTS**, with substantial division.
- FIVE LARGE PLATED METAL-FRAMED WINDOWS**.
- LARGE WARDROBE**, plus capacious roof and wall lockers.
- GAS AND ELECTRIC** lighting with full size oven-type gas cooker.
- HOT WATER GEYSER**, gas fuelled, and cold water storage tank.
- SOLID FUEL STOVE**, for space heating.
- FLOOR OF TIMBER** with hardboard lining covered by linoleum and carpet.

The roomy interior can be divided at night-time into two cosy bedrooms—two large single beds in the rear and an excellent double bed in the front apartment. In addition to the double bed settee there is an attractive stove installed in the forward part of the caravan on the near side between the entrance door and the wardrobe are opposite the kitchen installation. This accommodates cooker with oven and platerack, hot water heater, sink, taps and gas cylinder, and it is a fine example of the skill of designer and cabinet maker that there is also room to provide three large cupboards. In one of these the gas storage cylinder can be carried. This assembly will allow domestic arrangements to be made with ease and in the minimum of time since all is grouped readily to hand. Ventilation of this apartment is through two large opening windows and two roof ventilators.

The rear apartment contains further lockers and, in particular, two large single beds and a ventilated cupboard ideal for storage of foodstuffs convenient to the main position for the table. When the table is in use in this part there is seating accommodation for six, and with three large opening windows and a further two roof ventilators it is a pleasant dining room by day and an ideal family bedroom by night.

At eye-level throughout are many lockers and across the ends are long sturdy shelves. When not in use, the table is stowed out of the way across the end of the double bed.

**Price (ex works) £560 + £3 15 0d. Purchase Tax**

Weight, as delivered	- - - - -	26 cwt.
Height, overall	- - - - -	9 ft.
Length, overall	- - - - -	19 ft. 6 in. (17 ft. body)
Width, overall	- - - - -	7 ft. 3 in.
Head room, maximum	- - - - -	6 ft. 4 in.
Towing coupling attachment holes—2 at 11/16 in. at 3 1/2 in. centre at 17 in. from road surface		

NOTE—Every effort is made to conform to this specification, but Manufacturers reserve right to alter this as necessary.



Built in Scotland by

**THOMSONS (CARRON) LTD., FALKIRK**

(On the National Caravan Council List of Approved Manufacturers)