

Thomson T-Line Caravans

THOMSON T-LINE CARAVANS

PRICE LIST

RECOMMENDED RETAIL PRICES
EX WORKS

AUTUMN - 1970

Supersedes all previous Price Lists

Thomson
T-LINE
Caravans

Thomsons (Carron) Limited
Carron Falkirk Scotland
Phones: Larbert (0FA45) 2202 (5 lines)

MINI-GLEN (2-berth) £395

GLEN (4-berth) £425

GLEN (2-berth) £470

GLENDALE (2-berth) £505

GLENNEVIS (4-berth) £515

GLENELG (4-berth) £535

GLENALMOND (4-berth) £595

GLENMORE (4-berth) £595

GLENEAGLE (4-berth) £710

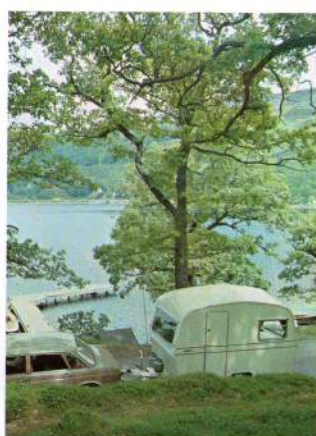


Take to the road with **T-LINE**

Whatever kind of car you drive there's a Thomson T-Line Caravan that's right behind it. And every year more and more carefree caravanners take a T-Line for the world's horizons — making new friends and exploring new countries in one of the finest of British-built trailers.

As the quality-conscious caravan market grows, so Thomsons sell more and more caravans. Because, quite simply, the T-Line is a hand-built winner at a mass-produced price.

Firstly, it's a winner on safety. Robust construction — from the rigid steel chassis to imported hardwood framing and heavy duty aluminium coachwork—will stand the strain of countless journeys. Planned weight distribution, superb brakes, independent suspension and such features as the hydraulic damper coupling take towing strain off you, and off your car. Towing some trailers can be a bit of a drag — with T-Line it's all straight and level.



Secondly, it's a winner on design. Inside and out. Over half a century of experience gives Thomsons the unique advantages that result in crisp, modern lines and tasteful interiors where everything is in just the right place (you can thank their lady customers for that — they play an important part in designing T-Line's interior layout)!

Thirdly, T-Line is a winner on durability. Some owners measure their T-Line's life in decades of wonderful touring.

For 1971 many additional features are included as standard — here are some of them: Newly styled furniture and cupboard catches, enlarged roof lights on the larger models, fitted water inlet and waste pipe nozzles, interior strip lighting, covered tow-pole, and a new door incorporating stressed framework and really effective weather sealing.

It all adds up to making T-Line what you want it to be. The best that money can buy.

This booklet is for you to read and enjoy at home.

In its pages and through Thomson's international network of dealers you'll find your ideal caravan, at your ideal price.

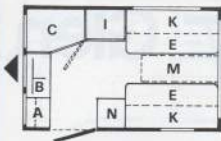


T-LINE Mini Glen

The smallest caravan in the range, this neat, compact model is especially designed to suit the small car owner. The wheels are interchangeable with the original BLMC Mini and the overall weight is less than this type of car.

The interior comprises: Dining Area which converts into a full sized double bed: Kitchenette with hot plate, grill, sink unit/drain and foot operated water pump.

There's a full sized wardrobe and toilet compartment. Everything in fact, which you would find in a larger model — cleverly spaced and fitted. Its luxurious finish makes it ideal for holiday couples.



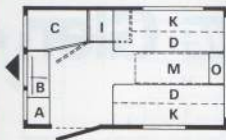
- A Cooker
- B Sink
- C Toilet
- E Dinette Bed
- I Wardrobe
- K Roof Locker and Shelf
- M Table Position
- N Cabinet



T-LINE Glen 2

T-Line swings into the seventies with this exciting new model. The Glen 2 is designed for the 1000 c.c. car or above. It has ample cupboard and storage space for all the equipment you are likely to need — even on extended touring. New for 1971 are the adjustable back rests behind the twin beds; the dining table fits on the roomy chest of drawers fitted at the rear. Toilet space is above average and, of course, full kitchen facilities are provided.

Like all T-Line models for 1971, the Glen 2 is fitted as standard with interior strip lighting.



- A Cooker
- B Sink
- C Toilet
- D Single Bed
- I Wardrobe
- K Roof Locker and Shelf
- M Table Position
- O Chest of Drawers



T-LINE Glen 4

This is the top value four berth caravan in the 10' range. Two separate living/sleeping areas are divided by the fully fitted centre kitchen and wardrobe. At the rear, the four seater dinette converts to a double bed, while the forward dinette can be used as a single with a bunk above. All this plus all the 1971 additions — strip lighting, improved cupboard catches, covered tow-pole, water connection points.



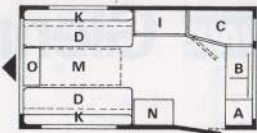
- A Cooker
- B Sink
- E Dinette Bed
- F Single Bed, Bunk Above
- I Wardrobe
- K Roof Locker and Shelf
- M Table Position
- P Shelf



T-LINE Glendale

The way for two to enjoy leisurely, luxury touring.

The Glendale is a spacious twelve footer with two single beds. New style back rests make for comfortable day time seating in a dining area which will seat up to six in comfort. Decor is in polished plywood, fitted carpet and rich light olive fabric. The fully fitted end kitchen is at the rear. Toilet and wardrobe accommodation is particularly generous.



- A Cooker
- B Sink
- C Toilet
- D Single Bed
- I Wardrobe
- K Roof Locker and Shelf
- M Table Position
- N Cabinet for Refrigerator
- O Chest of Drawers

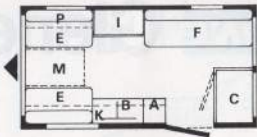


T-LINE Glennevis

This 'compact' sleeps four persons, or five by fitting the optional fifth berth conversion. Once again the Glennevis has the T-Line trick of keeping adults and children happy by having two separate sleeping areas for evening privacy.

Convenient toilet accommodation is included; a fully fitted kitchenette and ample storage cupboards make for easy housekeeping.

New for 1971 is the extra window on the rear offside.



- A Cooker
- B Sink
- C Toilet
- E Dinette Bed
- F Single Bed, Bunk Above
- I Wardrobe
- K Roof Locker and Shelf
- M Table Position
- P Shelf



T-LINE Glenelg

Proven over many years as T-Line's most popular model, the 1971 Glenelg is just about the ideal in medium sized family tourers.

There's sleeping accommodation for four adults, and the easily fitted optional conversion makes it a full five berth. A well laid out kitchen unit and spacious toilet area complete the generous specification.

New for 1971 are internal strip lighting, extra size roof light, Danish design furniture fittings, and many other extras.



- A Cooker
- B Sink
- C Toilet
- E Dinette Bed
- F Single Bed, Bunk Above
- I Wardrobe
- J Roof Locker
- K Roof Locker and Shelf
- M Table Position



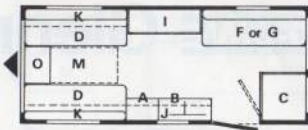
T-LINE

Glenalmond

Here's a very clever T-Line design which can sleep up to seven adults. Essentially a four berth; optional bunks over the forward singles plus a double bed conversion at the rear can provide the additional three berths.

The well designed kitchen unit, plentiful lockers and a good sized wardrobe make for that holiday essential — easy housekeeping.

In addition, all the 1971 improvements are included, making the Glenalmond outstanding caravan value.



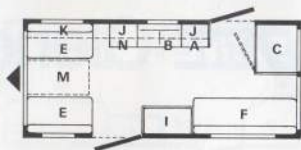
- A Cooker
- B Sink
- C Toilet
- D Single Bed
- F or G Single Bed, Bunk
Above or Double
Settee Bed
- I Wardrobe
- J Roof Locker
- K Roof Locker and Shelf
- M Table Position
- O Chest of Drawers



T-LINE Glenmore

Unique in the range, the Glenmore gives a Continental look to touring. Two doors are provided plus really roomy accommodation for a family of four. Here again an easily fitted optional conversion can provide that often needed extra berth.

The Glenmore comes with an extra large fully fitted kitchen unit, oversize toilet and wardrobe making this the ideal caravan for really comfortable home and overseas touring.



- A Cooker
- B Sink
- C Toilet
- E Dinette Bed
- F Single Bed, Bunk Above
- I Wardrobe
- J Roof Locker
- K Roof Locker and Shelf
- M Table Position
- N Cabinet for Refrigerator

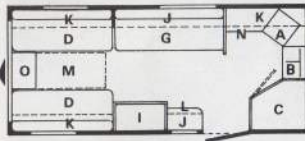


T-LINE Gleneagle

This is the roomiest of the T-Line range. Real luxury on wheels with an interior well over sixteen feet long giving really spacious living.

As standard, it provides two single beds plus a full-sized double. Additionally, two Pullman bunks can be supplied, making it a roomy six berth for touring or long-term holiday accommodation.

An oven cooker is supplied as standard, plus a really spacious shelved wardrobe, large toilet and the cupboard space one expects, and gets, in a caravan of this size and quality.



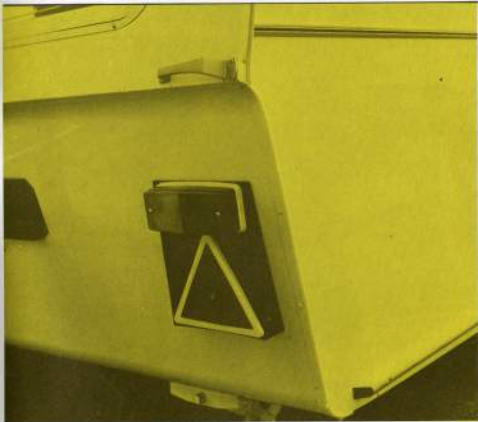
- A Cooker
- B Sink
- C Toilet
- D Single Bed
- G Settee Bed
- I Wardrobe
- J Roof Locker
- K Roof Locker and Shelf
- L Sideboard
- M Table Position
- N Cabinet for Refrigerator
- O Chest of Drawers

T-LINE BONUS FEATURES

Particulars of any changes may be obtained from Thomsons (Carron) Limited.

Caravan Manufacturers approved by
National Caravan Council

1-LINE BONUS FEATURES	Mini-Glen 2-Berth	Glen 2-Berth	Glen 4-Berth	Glenedale 2-Berth	Glennevis	Glenelg	Glenalmond	Glenmore	Gleneagle
B & B Independent Suspension	●	●	●	●	●	●	●	●	●
Full Frame channel steel chassis	●	●	●	●	●	●	●	●	●
Hydraulic damper coupling	●	●	●	●	●	●	●	●	●
Fully retractable telescopic Jockey Wheel	●	●	●	●	●	●	●	●	●
Gas cylinder carrier	●	●	●	●	●	●	●	●	●
Covered drawbar	●	●	●	●	●	●	●	●	●
Full road lighting	●	●	●	●	●	●	●	●	●
Triangular red reflectors	●	●	●	●	●	●	●	●	●
7-pin electrical connector and socket	●	●	●	●	●	●	●	●	●
Full length rubbing stroke	●	●	●	●	●	●	●	●	●
Full awning channel	●	●	●	●	●	●	●	●	●
20g Heavy Duty aluminium panelling	●	●	●	●	●	●	●	●	●
Anodised aluminium waist rails	●	●	●	●	●	●	●	●	●
Hardwood framing	●	●	●	●	●	●	●	●	●
Polished plywood panelling	●	●	●	●	●	●	●	●	●
Mineral wool insulation	●	●	●	●	●	●	●	●	●
Piano hinges on all partitions	●	●	●	●	●	●	●	●	●
Internal fluorescent lighting	●	●	●	●	●	●	●	●	●
Adjustable backrests on single beds	●	●	●	●	●	●	●	●	●
Water inlet and waste pipe nozzles	●	●	●	●	●	●	●	●	●
Integral frame windows with vent panels	●	●	●	●	●	●	●	●	●
Provision for fitting oven/cooker	●	●	●	●	●	●	●	●	●
Built-in refrigerator space	●	●	●	●	●	●	●	●	Fitted
5" deep polyfoam mattresses	●	●	●	●	●	●	●	●	●
Deep pile carpet with foam underlay	●	●	●	●	●	●	●	●	●
Gas supply point	●	●	●	●	●	●	●	●	●
Foot pump	●	●	●	●	●	●	●	●	●
Stressed frame stable door with weathertail	●	●	●	●	●	●	●	●	●
Overall (shipping) length (including drawbar)	12'3" 3734mm.	13'9" 4191mm.	13'9" 4191mm.	16" 4877mm.	16" 4877mm.	17' 5182mm.	18'9" 5715mm.	18'9" 5715mm.	20'7" 6274mm.
Body length	8'5" 2670mm.	10'6" 3200mm.	10'6" 3200mm.	12'5" 3785mm.	12'5" 3785mm.	13'6" 4115mm.	15'4" 4674mm.	15'4" 4674mm.	17'2" 5232mm.
Body width	6'5" 1986mm.	6'5" 1981mm.	6'6" 1981mm.	6'9" 2057mm.	6'9" 2057mm.	6'9" 2057mm.	6'9" 2057mm.	6'9" 2057mm.	7'3" 2210mm.
Body height	7'6" 2286mm.	7'10" 2388mm.	7'10" 2388mm.	8" 2438mm.	8" 2438mm.	8" 2438mm.	8'1" 2464mm.	8'1" 2464mm.	8'3" 2515mm.
Delivered weight (Tolerances 3%)	9½ cwt/s 470 kgs	10½ cwt/s 535 kgs	10½ cwt/s 520 kgs	12½ cwt/s 650 kgs	12½ cwt/s 635 kgs	13½ cwt/s 675 kgs	15 cwt/s 760 kgs	15 cwt/s 760 kgs	18½ cwt/s 930 kgs
Maximum authorised gross weight	11½ cwt/s 585 kgs	13½ cwt/s 685 kgs	13½ cwt/s 685 kgs	16½ cwt/s 825 kgs	16½ cwt/s 825 kgs	16½ cwt/s 850 kgs	20½ cwt/s 1030 kgs	20½ cwt/s 1030 kgs	23 cwt/s 1170 kgs
Tyre size	5.20x10	5.20x13	5.20x13	5.90x13	5.90x13	5.90x13	6.40x15	6.40x15	6.40x15 (ø-pl)
Tow ball height (middle of ball-car laden)	15" 381mm.	16" 381mm.	16" 381mm.	15" 381mm.	15" 381mm.	16" 381mm.	16" 381mm.	15" 381mm.	16" 406mm.

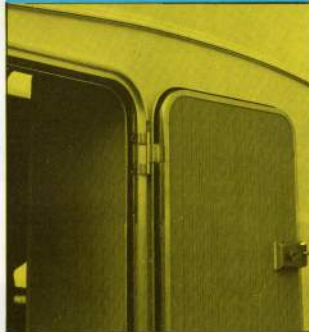


T-Line the Scots word for caravan

You've enjoyed this colourful brochure? Whether or not you're a caravanner, no doubt it brings back happy memories of past holidays and makes you look forward to new excitement and pleasure in the future.

You've seen the pictures — now see the trailer at your local T-Line dealer.

Then you'll really have something to look forward to.





T-LINE