



**Thomson
T-line
Caravans**

A Caravan for Everyone in 1972



Safe caravanning is happy caravanning. And T-Line is strong on safety. From rigid steel chassis to elegant roof, Scottish craftsmen hand-build the T-Line to stand the strain of countless journeys. Planned weight distribution, superb brakes, independent suspension and such features as a hydraulic damper coupling on all models, take towing strain off you, and off your car. Towing some trailers can be a bit of a drag—with T-Line it's all straight and level. Stylish caravanning is happy caravanning. And T-Line's dashing lines really look the part. Crisp modern design outside and tasteful labour-saving interiors with all mod cons make for a happy driver's tour, and a happy "cook's tour" as well



Every year from Caithness to Cannes, Devon to Dubrovnic, more carefree caravanners are taking the high road to happy holidays in T-Line caravans, making new friends and visiting new countries in one of the finest of British built trailers.

Of the people who buy caravans, a growing percentage are turning to T-Line as a hand-built example of all that's best in British workmanship (and, by the way, as one of the few caravan ranges that satisfy the British Standard specification for touring trailers).

For 1972 we present a 9 van range, built on more than 60 years experience, the best materials that money can buy and continual design and fitting refinements that keep T-Line caravans up to date, and their owners happy, year after year.



Low cost caravanning is happy caravanning. So T-Line is built to last, not to cost. Some owners measure their T-Line's life in decades of wonderful touring in scores of counties, or even countries. The 1972 Thomson T-Line range features many worthwhile improvements. Like new high-quality upholstery in the latest styles and shades with quilted patterns. New exterior styling with enlarged front windows on some models. New stainless steel sink and drainer plus polyester finish teak pattern working surfaces; and most important, a brand new look for the coachwork in pre-painted magnolia aluminium, the result of a new scientific painting process, that will give an even glossier and more durable finish.

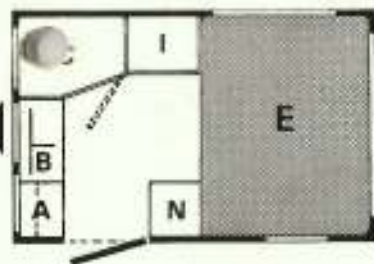
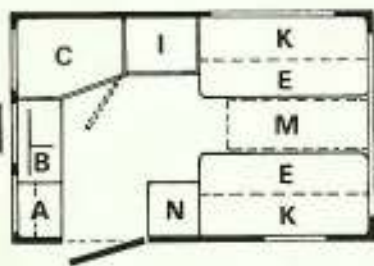
We hope you enjoy this brochure. In its pages and through Thomson's international dealer network we believe you'll find your ideal caravan at your ideal price. Because in 1972 there's a T-Line caravan for everyone.





Mini Glen

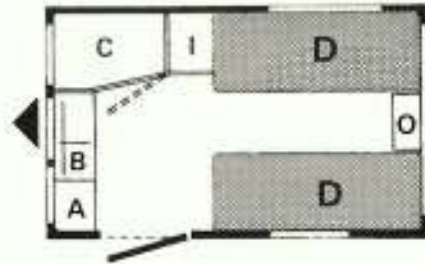
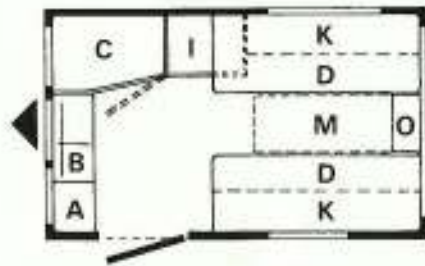
The baby of the range. And some baby! Like its namesake the BLMC Mini (their wheels are interchangeable by the way) the design ensures the maximum of interior space and the 9 ft. 5 in. length makes for easy towing and parking. Now, like its big brothers, fitted with hydraulic damper coupling, the Mini Glen has everything for the holiday couple. Inside there's a dining area which converts into a full size double bed; kitchenette with hot plate, grill, sink unit/drain, foot operated water pump; and full size wardrobe and toilet accommodation.



- A Cooker
- B Sink
- C Toilet
- E Dinette Bed 73" x 46"
- I Wardrobe
- K Roof Locker and Shelf
- M Table Position
- N Cabinet

Glen 2

Compact enough for the 1,000 cc car, but with all the space and luxury you'll need for extended touring, the 2 berth Glen has been a firm favourite since its introduction over 2 years ago. The Glen 2 incorporates twin beds (which can be made into a double bed) with adjustable back rests, opening centre front window and an ingenious chest of drawers/dining table mounting; large toilet space and full kitchen facilities including a stainless steel sink unit.



- A Cooker
- B Sink
- C Toilet
- D Single Bed each 72" x 24"
- I Wardrobe
- K Roof Locker and Shelf
- M Table Position
- O Chest of Drawers



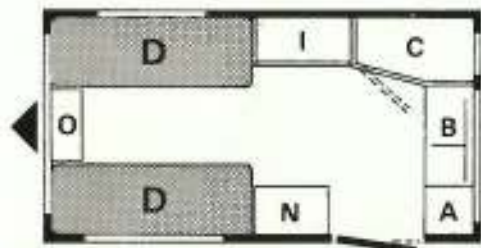
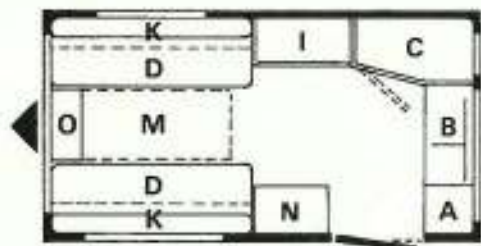
Glendale

Go on, spoil yourself in the T-Line that could be big enough for four but, instead, is built for two to really spread themselves in luxury. A spacious 12 footer with 2 single beds (which can be made into a double bed) and ingenious back rests that make for comfortable day-time seating and a 6-person dining area. With decor in polished plywood, fitted carpets and attractive upholstery, the Glendale is for those who want all the comforts of home and all the freedom in the world.

The Growing T-Line Family

So far we've dealt only with our 2-berth models.

For those who require more accommodation (indeed, in some cases, accommodation which can grow with your family) T-Line can also provide the complete answer.

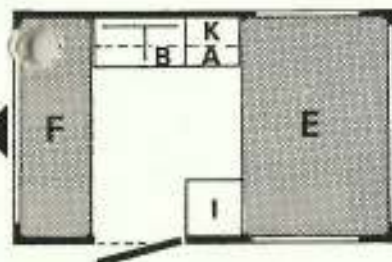
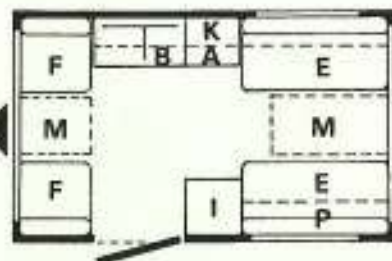


- A Cooker
- B Sink
- C Toilet
- D Single Bed each 75" x 24"
- I Wardrobe
- K Roof Locker and Shelf
- M Table Position
- N Cabinet for Refrigerator
- O Chest of Drawers



Glen 4

Most budget conscious of the T-Line 4 berthers, the more-for-your-money Glen 4 offers two separate living/sleeping areas divided by a fully fitted kitchen, wardrobe and partition curtain. At the rear 4-seater dinette converts to a double bed, while the forward dinette can be used as a single with a hammock above. All this plus strip lighting, new style king-size roof lockers and, for 1972, a big new fixed front window for improved appearance and visibility.

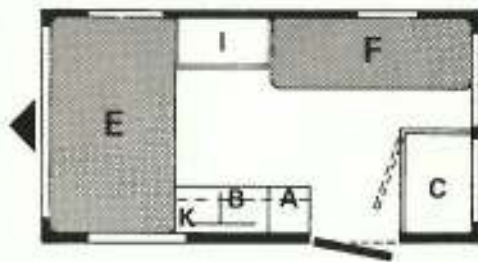
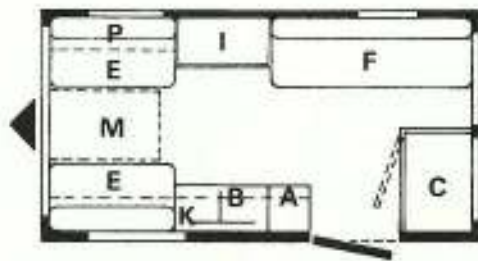


- A Cooker
- B Sink
- E Dinette Bed 73" x 46"
- F Single Bed 72" x 24",
Hammock Above 69" x 22"
- I Wardrobe
- K Roof Locker and Shelf
- M Table Position
- P Shelf



Glennevis

An optional 5 berther, the luxury Glennevis divides to give adults and children privacy and comfort. As in all the T-Lines, the Glennevis interior is designed for maximum roominess and easy housekeeping and this compact model incorporates many 1972 innovations including gleaming stainless steel sink unit, bright new upholstery and polyester teak pattern working surfaces.



- A Cooker
- B Sink
- C Toilet
- E Dinette Bed 73" x 46"
- F Single Bed 72" x 24",
Bunk Above 69" x 22"
- I Wardrobe
- K Roof Locker and Shelf
- M Table Position
- P Shelf



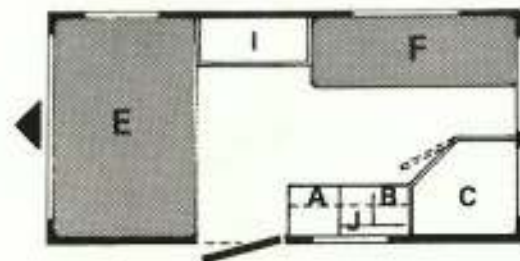
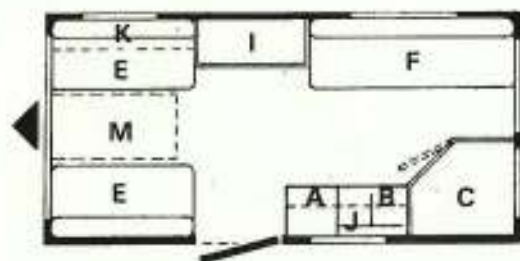
Glenelg

The T-Line best seller ; incorporating all that's best in quality and design. The Glenelg accommodates 4 (or 5 if you like). New exterior and interior modifications, like a larger front window for better visibility, easy clean vinyl-coated roof panels and capacious end roof lockers, bring this firm favourite bang up to date for 1972.

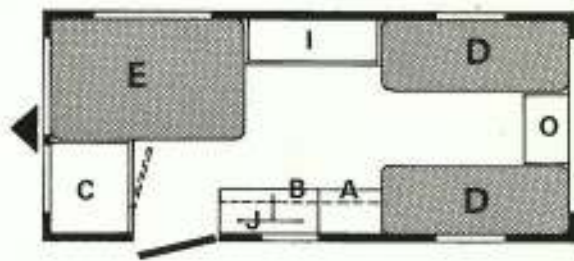
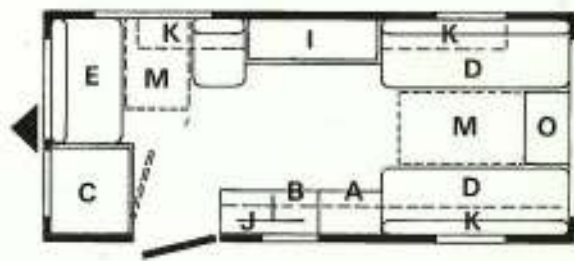


Glenalmond

The 4 berther that can sleep 6, yes 6 adults. Optional bunks over the rear singles provide the additional 2 berths. New for 1972 is the front end dinette layout and enlarged toilet space. The spacious interior, designed for women by women, and the modern units and working surfaces make the Glenalmond outstanding value for the larger family.



- A Cooker
- B Sink
- C Toilet
- E Dinette Bed 73" x 46"
- F Single Bed 72" x 24",
Bunk Above 69" x 22"
- I Wardrobe
- J Roof Locker
- K Roof Locker and Shelf
- M Table Position

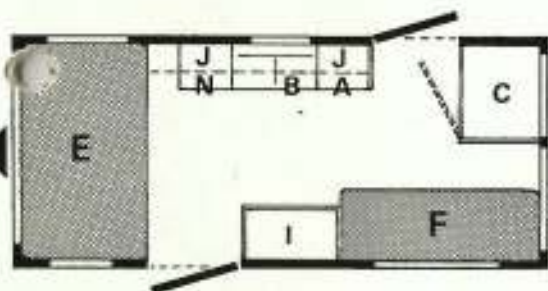
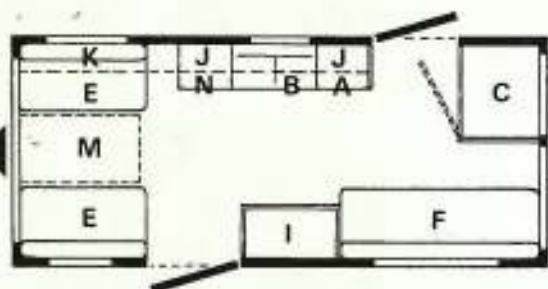


- A Cooker
- B Sink
- C Toilet
- D Single Bed each 72" x 24"
- E Dinette Bed 73" x 46"
- I Wardrobe
- J Roof Locker
- K Roof Locker and Shelf
- M Table Position
- O Chest of Drawers



Glenmore

2 doors and really spacious accommodation for 4 make the Glenmore ideal for long distance and continental touring. Wardrobe and kitchen space are on the grand scale and there's an optional berth available. New for 1972—the big front window and embossed metal stoneguard to keep the paintwork pristine fresh.

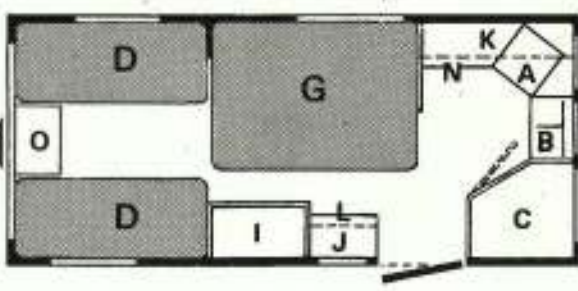


- A Cooker
- B Sink
- C Toilet
- E Dinette Bed 73" x 46"
- F Single Bed 72" x 24"
- Bunk Above 69" x 22"
- I Wardrobe
- J Roof Locker
- K Roof Locker and Shelf
- M Table Position
- N Cabinet for Refrigerator



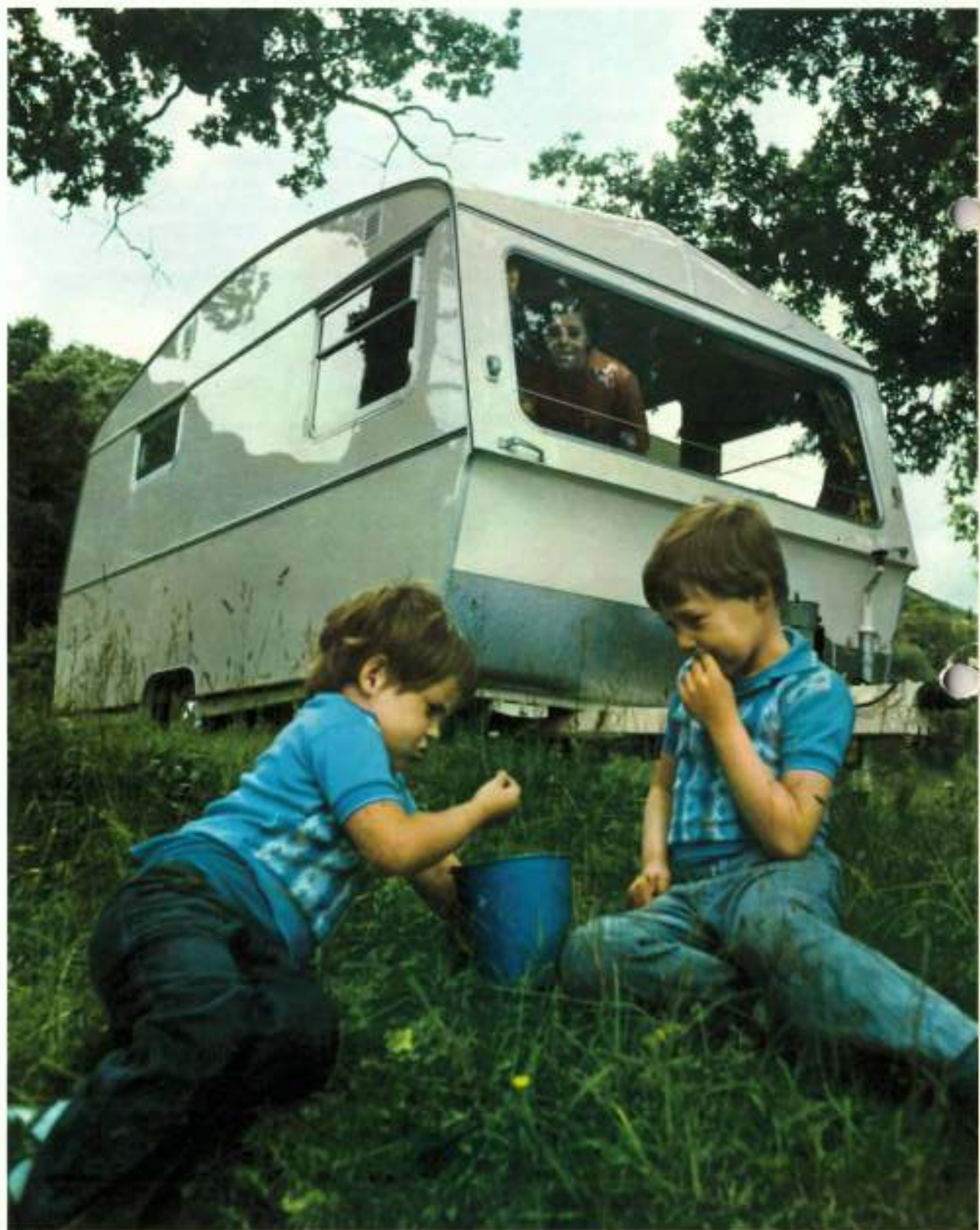
Gleneagle

Caravanning in the style to which everybody would like to become accustomed! With an interior well over 16 feet long, the Gleneagle provides really spacious living. 2 single beds and a full size double bed come as standard and, in addition, two Pullman bunks can be supplied, making the Gleneagle a roomy 6 berther. A full oven cooker is included in the specification.



- A Cooker
- B Sink
- C Toilet
- D Single Bed each 72" x 24"
- G Settee Bed 72" x 46"
- I Wardrobe
- J Roof Locker
- K Roof Locker and Shelf
- L Sideboard
- M Table Position
- N Cabinet for Refrigerator
- O Chest of Drawers

**T-Line
good news
that travels fast**



We hope you've enjoyed looking through our range for 1972. As you'll discover when you buy a T-Line, we at Thomsons really go out of our way to provide the best in performance, durability and comfort. And, if you enjoy caravanning with kindred spirits, the T-Line Owners Club, a friendly company of caravanners who arrange all kinds of rallies and club activities, are waiting to welcome you. Care to join them?



Thomson T-Line Caravans
Thomsons (Carron) Limited
Carron Falkirk Scotland
Phones : Larbert (03245) 2202
Cables : Caravans, Falkirk

Caravan Manufacturers approved by
National Caravan Council

The photography in this brochure was
carried out at Loch Earn Caravan Park,
St. Fillans, Perthshire and at Callendar
Park, Falkirk.

Thomson T-Line Caravans

The issue of this brochure does not constitute an offer and sales are conditional upon terms of business and express warranty issued by the makers of the caravans.

While the information contained in this brochure is correct at September, 1971

it may be that, on account of the use of alternative materials or the shortage of supplies, alterations may have to be made to the caravans described in this brochure.

Particulars of any changes may be obtained from Thomsons (Carron) Limited.

T-LINE STANDARD FEATURES

	Mini-Glen 2-Berth	Glen 2-Berth	Glen 4-Berth	Glendale 2-Berth	Glennavis	Glensig	Glenaimond	Glenmore	Glensiege
B & B Independent Suspension	●	●	●	●	●	●	●	●	●
Full Frame channel steel chassis	●	●	●	●	●	●	●	●	●
Hydraulic damper coupling	●	●	●	●	●	●	●	●	●
Fully retractable telescopic Jockey wheel	●	●	●	●	●	●	●	●	●
Gas cylinder carrier	●	●	●	●	●	●	●	●	●
Complete drawbar fitting	●	●	●	●	●	●	●	●	●
Full road lighting	●	●	●	●	●	●	●	●	●
7-Pin Electrical connector and socket	●	●	●	●	●	●	●	●	●
Full length rubbing strakes	●	●	●	●	●	●	●	●	●
Awning channel	●	●	●	●	●	●	●	●	●
High gloss pre-painted aluminium paneling	●	●	●	●	●	●	●	●	●
Embossed metal stoveguard	●	●	●	●	●	●	●	●	●
Anodised aluminium mouldings	●	●	●	●	●	●	●	●	●
Hardwood framing	●	●	●	●	●	●	●	●	●
Polyurethane finished plywood paneling	●	●	●	●	●	●	●	●	●
Mineral wool insulation—1" thick	●	●	●	●	●	●	●	●	●
Plane hinges on all partitions	●	●	●	●	●	●	●	●	●
Internal fluorescent lighting	● (1)	● (1)	● (1)	● (1)	● (1)	● (1)	● (2)	● (2)	● (2)
Full gas lighting	●	●	●	●	●	●	●	●	●
Adjustable back rests on single beds	●	●	●	●	●	●	●	●	●
Water inlet and waste pipe nozzles	●	●	●	●	●	●	●	●	●
Stainless steel sink and drainer	●	●	●	●	●	●	●	●	●
Foot pump	●	●	●	●	●	●	●	●	●
Tuckaway water faucet	●	●	●	●	●	●	●	●	●
Integral frame windows with vent panels	●	●	●	●	●	●	●	●	●
Space for optional full oven cooker	●	●	●	●	●	●	●	●	Fitted
Space for optional 1 cu. ft. refrigerator	●	●	●	●	●	●	●	●	●
Quilted mattresses of 5" deep polyfoam	●	●	●	●	●	●	●	●	●
Deep pile carpet with foam underlay	●	●	●	●	●	●	●	●	●
Gas supply point	●	●	●	●	●	●	●	●	●
Stressed frame stable door with weatherseal	●	●	●	●	●	●	●	●	●
Extra large roof and end lockers	●	●	●	●	●	●	●	●	●
Bottle storage and crockery rack	●	●	●	●	●	●	●	●	●
Washable vinyl-faced roof panels	●	●	●	●	●	●	●	●	●
Full compliance with British Standard 4626 (1970) for touring caravans.	●	●	●	●	●	●	●	●	●
Overall (shipping) length (including drawbar)	12'3" 3734mm.	13'9" 4191mm.	13'9" 4191mm.	16' 4877mm.	16' 4877mm.	17' 5182mm.	18'9" 5715mm.	18'9" 5715mm.	20'7" 6274mm.
Body length	9'5" 2870mm.	10'6" 3200mm.	10'6" 3200mm.	12'6" 3785mm.	12'6" 3785mm.	13'6" 4115mm.	15'4" 4674mm.	15'4" 4674mm.	17'2" 5232mm.
Body width	6'8" 1958mm.	6'8" 1981mm.	6'8" 1981mm.	6'8" 2057mm.	6'8" 2057mm.	6'8" 2057mm.	6'8" 2057mm.	6'8" 2057mm.	7'3" 2210mm.
Body height	7'6" 2286mm.	7'10" 2388mm.	7'10" 2388mm.	8' 2438mm.	8' 2438mm.	8' 2438mm.	8'1" 2464mm.	8'1" 2464mm.	8'3" 2515mm.
Delivered weight (Tolerances 3%)	9 cwts 480 kgs	10 cwts 510 kgs	10 cwts 510 kgs	12 cwts 610 kgs	12 cwts 610 kgs	12½ cwts 680 kgs	14½ cwts 725 kgs	14½ cwts 725 kgs	17½ cwts 880 kgs
Maximum authorised gross weight	11½ cwts 585 kgs	13½ cwts 685 kgs	13½ cwts 685 kgs	16½ cwts 825 kgs	16½ cwts 825 kgs	16½ cwts 860 kgs	20½ cwts 1030 kgs	20½ cwts 1030 kgs	23 cwts 1170 kgs
Tyre size	5.20x10	5.20x13	5.20x13	5.90x13	5.90x13	5.90x13	6.40x15	6.40x15	6.40x16 (over)
Tow ball height (middle of ball-car laden)	15" 381 mm.	15" 381mm.	15" 381mm.	15" 381mm.	15" 381mm.	15" 381mm.	15" 381mm.	15" 381mm.	16" 406mm.

PRICE LIST

RECOMMENDED RETAIL PRICES
EX WORKS

AUTUMN - 1971

Supersedes all previous Price Lists

MODEL		LENGTH	BERTHS	DELIVERED WEIGHT	RECOMMENDED EX WORKS PRICE
Mini Glen 2	M2	9'5"	2	9 cwts	£420
Glen 2	G2	10'6"	2	10 cwts	£485
Glendale	GD	12'5"	2	12 cwts	£525
Glen 4	G4	10'6"	4	10 cwts	£435
Glennevis	GN	12'5"	4 (5)	12 cwts	£525
Glenelg	GG	13'6"	4 (5)	12¾ cwts	£555
Glenalmond	GA	15'4"	4 (6)	14¼ cwts	£620
Glenmore	GM	15'4"	4 (5)	14¼ cwts	£620
Gleneagle	GE	17'2"	4 (6)	17½ cwts	£730

THE FOLLOWING TABLE GIVES DETAILS OF THE COMPLETE RANGE OF FACTORY FITTED OPTIONAL EXTRAS WHICH CAN BE INSTALLED ON REQUEST

PLEASE CONSULT YOUR DEALER FOR DETAILS AND PRICES

FACTORY FITTED OPTION	M2	G2	GD	G4	GN	GG	GA	GM	GE
Flued Gas Heater	N.A.	X	X	X	X	X	X	X	X
Floor Insulation (25 mm polystyrene)	X	X	X	X	X	X	X	X	X
Oven Cooker (in lieu of hotplate)	X	X	X	X	X	X	X	X	S
R.A. 10 Refrigerator	X	X	X	X	X	X	X	X	X
Chest of Drawers	N.A.	S	S	N.A.	X	X	S	X	S
Pullman Type Bunk	N.A.	N.A.	X	N.A.	S	S	X	S	X
Pull-out Double Bed Conversion	N.A.	N.A.	N.A.	N.A.	X	X	N.A.	X	N.A.
Stainless Steel Sink	S	S	S	X	S	S	S	S	S
Rear End Table 20" x 25"	N.A.	N.A.	N.A.	N.A.	X	X	N.A.	X	N.A.

"X" - Available

"N.A." - Not Available

"S" - Fitted as Standard

ADDITIONALLY: OCCASIONAL SQUAB CUSHIONS (18" x 8" x 5") AND SCATTER CUSHIONS MATCHING UPHOLSTERY AND CURTAINS RESPECTIVELY ARE AVAILABLE FROM YOUR DEALER.

Thomson **T-LINE** Caravans

Thomsons (Carron) Limited
CARRON · FALKIRK · SCOTLAND

Telephone: Larbert (03245) 2202

When visiting your T-line Dealer
 use this Check List in selecting the particular T-line model which best suits your family's
 needs.

Remember - even where other manufacturers can offer at least some of the listed
 features, they may not be standard throughout their range and could possibly involve extra
 charges on the listed Price

FEATURE	THOMSON	MAKE X	MAKE Y	MAKE Z
GROUP A :-				
<i>Durability and Strength</i>				
1. Meranti Hardwood Framing throughout	X			
2. Tongued and Grooved House Type Flooring	X			
3. 1" Thick Mineral Wool Insulation	X			
4. Hardwood Rubbing Strakes	X			
5. Piano Hinges on furniture	X			
6. Fitted stoneguard	X			
7. Positive catches on all doors	X			
GROUP B :-				
<i>Standard Fittings</i>				
8. 5" thick Foam Bedding	X			
9. 22" x 15" Stainless Steel Sink and drainer (except G4)	X			
10. 12 volt Fluorescent Lighting	X			
11. Fitted Gas Point	X			
12. Inlet and Outlet Water Nozzles	X			
13. Foot operated Water Pump	X			
14. Fitted Plate Rack	X			
15. Crockery Holder	X			
16. Refrigerator Type Door Liner	X			
17. 7-pin Plug & Socket supplied	X			
18. Full Drawbar Fairing (except M2)	X			
19. Hub Caps & Rim Embellishers	X			
20. Stable Door	X			
21. Lee Board on Upper Bunk(s)	X			
22. Stainless Steel Heat Deflectors on all Gas Lights	X			
23. Delivered Weight	Cwts	Cwts	Cwts	Cwts
24. Available Carrying Capacity for Personal Effects	Cwts	Cwts	Cwts	Cwts
25. Full Compliance with British Standard BS 4626 (1970)	X			

ASK YOUR DEALER - BECAUSE THESE FEATURES REALLY DO COUNT!

THOMSON (CARAVAN) LIMITED
 CARAVAN - FAIRFAX - SCOTLAND
 Telephone: (0475) 5221