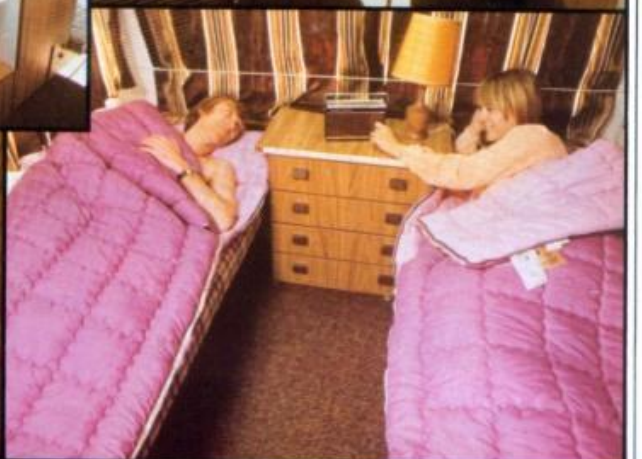


THOMSON

T-LINE

CARAVANS





The Thomson policy of continuous development over 60 years has brought many innovations in comfort, convenience, economy and safety to the T-Line range. 1978 brings even greater improvements to a range that has already established itself throughout Europe, Canada, The Far East and Africa.

This year the chassis of all models have been increased in size to provide even larger interiors and the general safety of the range has been improved by the introduction of radial ply tyres and the use of safety glass.

A complete change of interior styling can be seen in every Glen model, the wider use of vinyl and the smooth profile provided by the new round edged units blend with the Honey Teak finish to provide a completely new look.

From the outside, the changes to the range are just as dramatic. The two tone decorative bands of colour on the caravans are Vandyke brown and honey with wheel arch spats to set off the new trim.

The Clan series has also undergone a change of its own and is now finished in white and mustard.

The individual series still maintain their remarkable versatility and particular features.

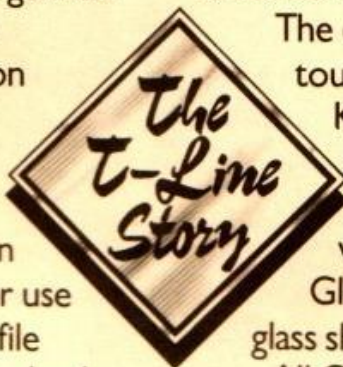
The Clan series can sleep from 4 to as many as 7 in the Clan 1400 while there are 5 berth options in many Glens and 6 in the Gleneagle. The Gleneagle is an excellent example of all that Thomson can do with a caravan—it has two dinettes, a cocktail cabinet, oven cooker and 5" deep mattresses—all standard equipment.

The carpets in the Clans are tough synthetic and loop-pile Kosset in the Glens. The lighting in both the Glens and Clans is fluorescent with standby gas fittings. (The Glens are fitted with new fibre glass shades).

All Glens have lockable moulded glass fibre gas cylinder chests and with the exception of the Mini, they can accommodate the new king size 7Kg gas cylinder.

By retaining the best of their designs in this way and improving wherever possible, Thomson have been first with the best in modern caravan design year after year.

We think you will agree that 1978 is no exception.



CLAN 1000

As soon as you open the door you can see that your money has been well spent with this smart 4-berth. The generous layout incorporates a fully fitted kitchen, wardrobe and partition curtain which serve to divide the two separate living/sleeping areas making this the ideal budget caravan for the small family.



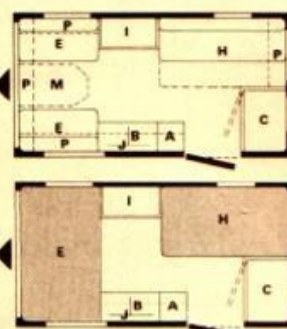
- A Griller/Hotplate
- B Sink
- E Dinette Bed 72" X 46"
- F Single Bed 72" X 24"
- Hammock Above 68" X 20"
- I Wardrobe
- J Roof Locker
- M Table Position
- P Shelf



CLAN I200 This is a medium-sized T-Line caravan with a price to match. The large berths and hammock give sleeping accommodation for as many as 5 people. The centre kitchen is equipped with a stainless steel sink/drain and hotplate/griller which even makes feeding five an easy job. With many other practical features like a toilet compartment as standard, this model is excellent value.



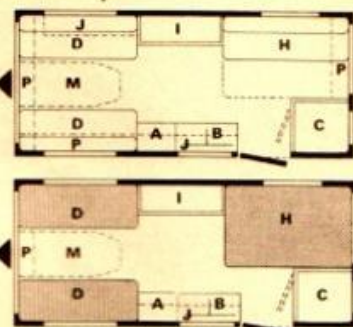
- A Griller/Hotplate
- B Sink
- C Toilet
- E Dinette Bed 75"X46"
- H Double Settee Bed 72"X46"
- Hammock Above 66"X20"
- I Wardrobe
- J Roof Locker
- M Table Position
- P Shelf



CLAN I400 A lightweight 5-berth with single bed and hammock accommodation which easily converts to sleep as many as 7. The expansive nature of this model extends throughout its design with a fully equipped centre kitchen and luxurious forward dinette with toilet compartment in the rear. Even a large family will find itself short of nothing in this T-Line.



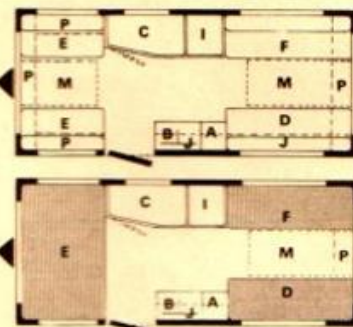
- A Griller/Hotplate
- B Sink
- C Toilet
- D Single Bed 72"X24"
- H Double Settee Bed 72"X44"
- Hammock Above 66"X20"
- I Wardrobe
- J Roof Locker
- M Table Position
- P Shelf



CLAN I600 A particularly well-equipped caravan at a most reasonable price. The front double dinette and rear single beds and hammock provide superb sleeping accommodation for 5 or 6 if you wish. The wardrobe and king size toilet compartment are just two of the many features which all go to making a family holiday in this model a certain success.



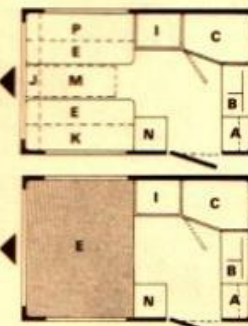
- A Griller/Hotplate
- B Sink
- C Toilet
- D Single Bed 72"X24"
- E Dinette Bed 75"X46"
- F Single Bed 72"X24"
- Hammock Above 66"X20"
- I Wardrobe
- J Roof Locker
- M Table Position
- P Shelf



MINI GLEN How many caravans under 10ft. do you think there are like this one? With a dining area that converts to a double bed, a complete kitchenette with hotplate/griller and sink unit/drain, a full size wardrobe and toilet all carefully designed so it even leaves space for a fridge. We're sure there aren't many, and at the price we know there's only one



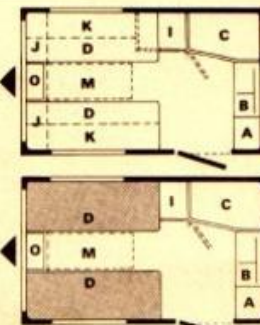
- A Griller/Hotplate
- B Sink
- C Toilet
- E Dinette Bed 72"X48"
- I Wardrobe
- J Roof Locker
- K Roof Locker and Shelf
- M Table Position
- N Cabinet for Refrigerator
- P Shelf



GLEN 2 For the small car owner there isn't a more comfortable caravan of the size. For all its compactness you will enjoy twin beds which convert to a double, a panoramic front window, bolster-type back rests, a chest of drawers/dining table and a toilet compartment complete with personal wash basin. At the price, you simply couldn't hope for more.



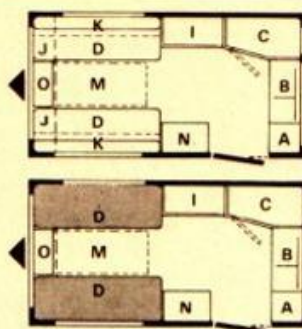
- A Griller/Hotplate
- B Sink
- C Toilet
- D Single Bed 72"X24"
- I Wardrobe
- J Roof Locker
- K Roof Locker and Shelf
- M Table Position
- O Chest of Drawers



GLENDALE A real achievement in caravan luxury for 2 people. With a body length of 12'10", this T-Line model is beautifully finished with polished plywood furniture, fitted carpets and rich textured upholstery. The spacious dining area can seat six people and still leave room to move. Equipped throughout with all the features you would expect of Thomsons, it guarantees complete comfort wherever you go.



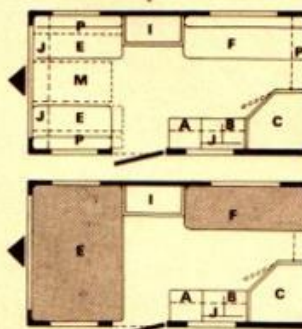
- A Griller/Hotplate
- B Sink
- C Toilet
- D Single Bed 75"X26"
- I Wardrobe
- J Roof Locker
- K Roof Locker and Shelf
- M Table Position
- N Cabinet for Refrigerator
- O Chest of Drawers



GLENNEVIS This model makes the most of interior space without intruding on it. Even with berths for as many as 5 people, the living and working areas in the caravan are still remarkably spacious with a stainless steel sink unit, smart new upholstery and Honey Teak melamine faced working surfaces. A unique combination of the practical and the comfortable.



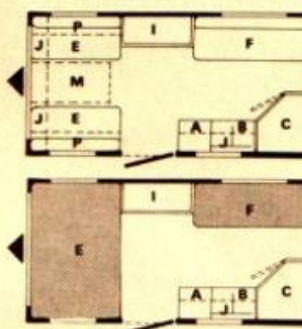
- A Griller/Hotplate
- B Sink
- C Toilet
- E Dinette Bed 75"X48"
- F Single Bed 72"X24"
- Pullman Bunk 69"X22"
- I Wardrobe
- J Roof Locker
- M Table Position
- P Shelf



GLENELG Look inside this T-Line model and you will see common sense and comfort perfectly combined. The roof and wall panels are coated in vinyl so you can simply wipe them clean. The optional 5 berth capacity sleeps everybody comfortably and still allows lots of space for modern work units and convenient end roof lockers with enough room for everyone's belongings. The increased length of this model now gives it a larger wardrobe unit and toilet as well as its many standard features.



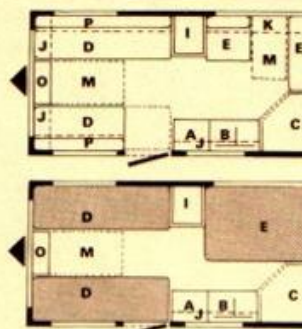
- A Griller/Hotplate
- B Sink
- C Toilet
- E Dinette Bed 75"X46"
- F Single Bed 72"X24"
- Pullman Bunk 69"X22"
- I Wardrobe
- J Roof Locker
- M Table Position
- P Shelf



GLENALMOND Even 5 people is no problem in this large 4-berth. The spacious lines extend between big, big windows at each end to give lots of light and a glorious view from the large dinette table. Complete with roof lockers, chest of drawers and ample cooking and washing facilities, this is the T-Line that puts the larger family in the lap of luxury.



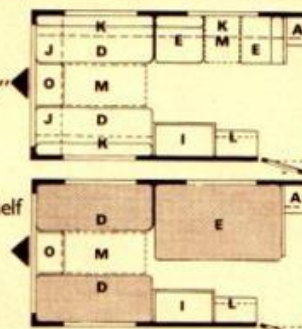
- A Griller/Hotplate
- B Sink
- C Toilet
- D Single Bed 72"X24"
- E Dinette Bed 75"X46"
- I Wardrobe
- J Roof Locker
- K Roof Locker and Shelf
- M Table Position
- O Chest of Drawers
- P Shelf



GLENEAGLE When Thomsons take more than 17ft. of caravan you can expect them to fill it with a lot of comfort, convenience and space. In this model you will find 2 single beds, a centre dinette with 2 table layout with the space to install 2 Pullman bunks to make this a generous 6 berth, complete with end kitchen, oven cooker, cocktail cabinet, king size toilet and of course space for a fridge.



- A Full Oven Cooker
- B Sink
- C Toilet
- D Single Bed 72"X24"
- E Dinette Bed 72"X44"
- I Wardrobe
- J Roof Locker
- K Roof Locker and Shelf
- L Cocktail Cabinet
- M Table Position
- O Chest of Drawers
- P Shelf
- R Cupboard



The issue of this brochure does not constitute an offer and sales are conditional upon terms of business and express warranty issued by the makers of the caravans.

While the information contained in this brochure is correct at September 1977 it may be that, on account of the use of alternative materials or the shortage of supplies, alterations may have to be made to the caravans described in this brochure. Diagram and detailed specifications of each caravan are not to scale.

Particulars of any changes may be obtained from Thomsons (Carron) Limited, Carron, Falkirk, Scotland.
Phone: Larbert (03245) 2202. Cables: Caravans, Falkirk. Caravan Manufacturers approved by National Caravan Council.

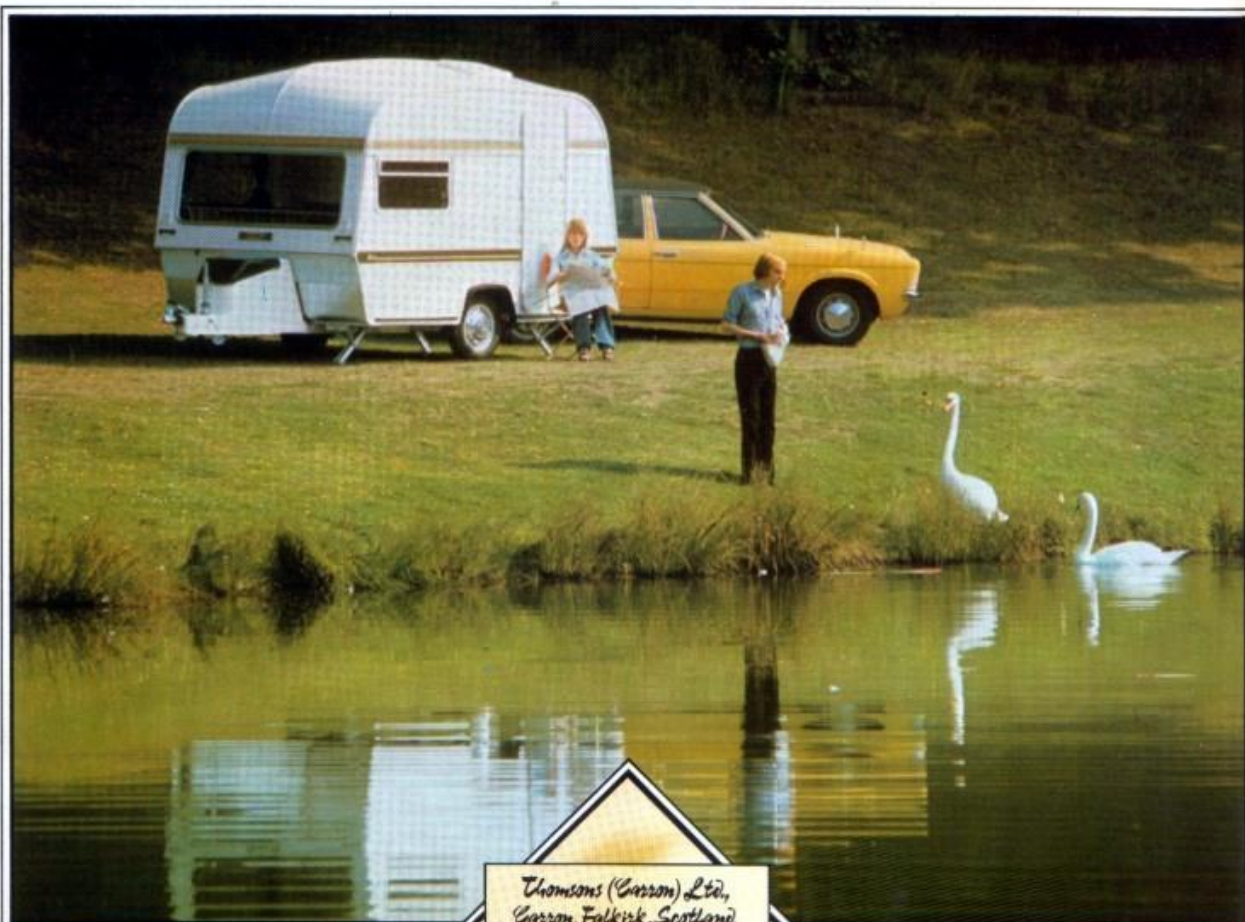
Star Features



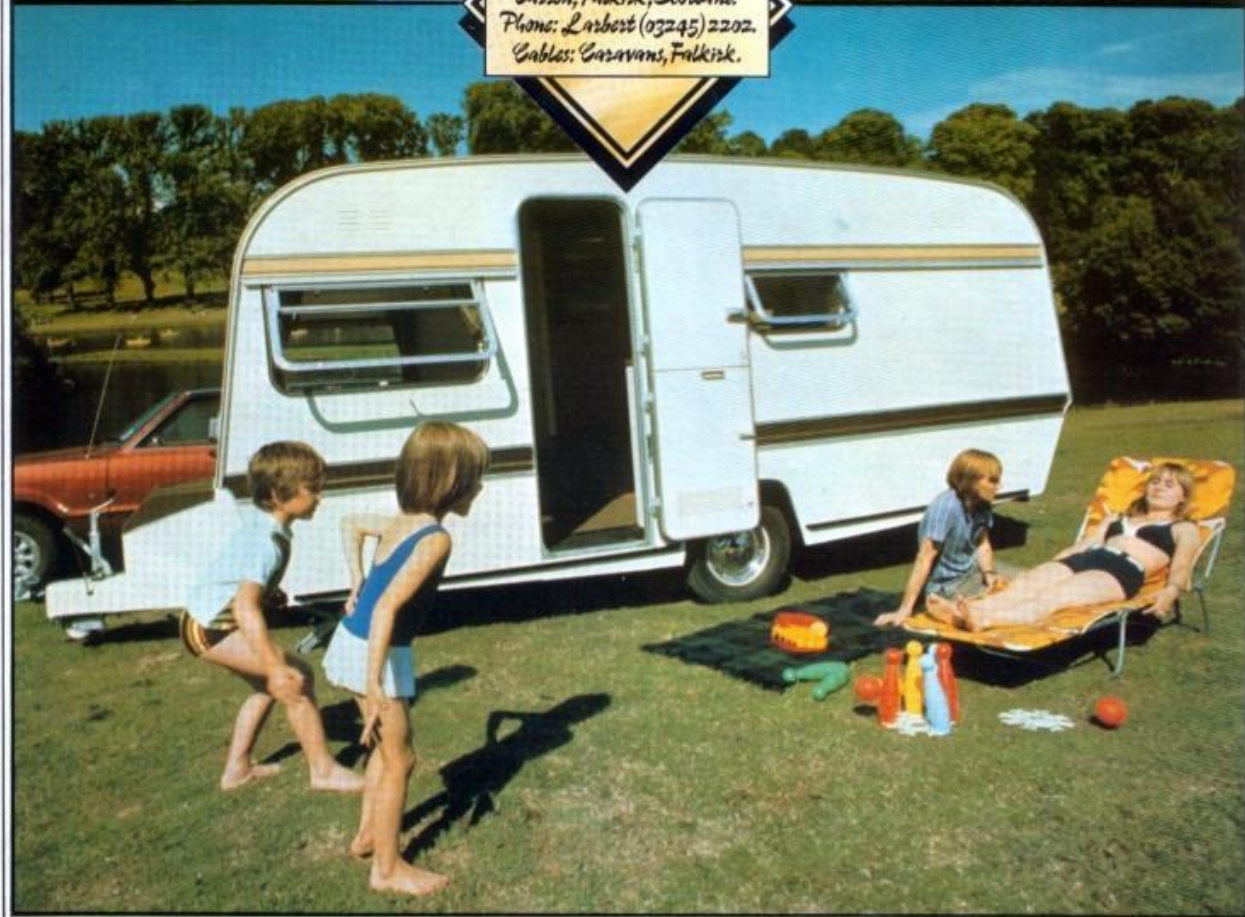
Star Features

	CLAN 1000	CLAN 1200	CLAN 1400	CLAN 1600	MINI-GLEN	GLEN 2	GLENDALE	GLENNEVIS	GLENELG	GLENALMOND	GLENEAGLE
B. & B. Independent Suspension	•	•	•	•	•	•	•	•	•	•	•
Full frame channel steel chassis	•	•	•	•	•	•	•	•	•	•	•
Sigma Automatic 'back-up' coupling	•	•	•	•	•	•	•	•	•	•	•
Polished wheel embellishers	•	•	•	•	•	•	•	•	•	•	•
Fully retractable jockey wheel	•	•	•	•	•	•	•	•	•	•	•
Insulated floor	•	•	•	•	•	•	•	•	•	•	•
Gas Cylinder chest and fanning	•	•	•	•	•	•	•	•	•	•	•
Gas Cylinder carrier	•	•	•	•	•	•	•	•	•	•	•
Full road lighting	•	•	•	•	•	•	•	•	•	•	•
7-pin Electrical connector	•	•	•	•	•	•	•	•	•	•	•
Full length rubbing strakes	•	•	•	•	•	•	•	•	•	•	•
Awning channel	•	•	•	•	•	•	•	•	•	•	•
High gloss pre-painted aluminium paneling	•	•	•	•	•	•	•	•	•	•	•
Integral frame windows in safety glass	•	•	•	•	•	•	•	•	•	•	•
Embossed metal stoneguard	•	•	•	•	•	•	•	•	•	•	•
Accommodation for fluid heater	•	•	•	•	•	•	•	•	•	•	•
"Courteffe" Fibre insulation	•	•	•	•	•	•	•	•	•	•	•
Internal fluorescent lighting	1	1	1	2	2	2	2	2	2	2	2
Electrical wiring for additional light	•	•	•	•	•	•	•	•	•	•	•
Gas lighting	1	1	1	1	1	1	1	1	1	1	1
Water inlet and waste pipe nozzles	•	•	•	•	•	•	•	•	•	•	•
Combined sink/hotplate in stainless steel	•	•	•	•	•	•	•	•	•	•	•
Stainless steel sink and drainer	•	•	•	•	•	•	•	•	•	•	•
Stainless steel hotplate	•	•	•	•	•	•	•	•	•	•	•
Electric pump	•	•	•	•	•	•	•	•	•	•	•
Foot pump	•	•	•	•	•	•	•	•	•	•	•
Space for optional oven	•	•	•	•	•	•	•	•	•	•	Fixed
Space for optional 1 cu. ft. refrigerator	•	•	•	•	•	•	•	•	•	•	•
Space for optional 2 cu. ft. refrigerator	•	•	•	•	•	•	•	•	•	•	•
Basic sleeping accommodation	4	5	5	5	2	2	2	4	4	4	4
Optional extra sleeping accommodation	•	•	+2	+2	•	•	•	+1	+1	+1	+2
Deep polyfoam settee/beds	•	•	•	•	•	•	•	•	•	•	•
Kosset loop pile carpeting	•	•	•	•	•	•	•	•	•	•	•
Foam backed nylon carpeting	•	•	•	•	•	•	•	•	•	•	•
Bottle storage & crockery rack	•	•	•	•	•	•	•	•	•	•	•
Washable vinyl-faced roof panels and walls	•	•	•	•	•	•	•	•	•	•	•
Washbasin and courtesy light in toilet	•	•	•	•	•	•	•	•	•	•	•
Faucet in toilet	•	•	•	•	•	•	•	•	•	•	•
Full compliance with British Standard 4626 (1970) for touring caravans	•	•	•	•	•	•	•	•	•	•	•
Overall (shipping) length (including drawbar)	13' 8" 4164mm	15' 7" 4750mm	18' 0" 5486mm	20' 3" 6172mm	12' 9" 3886mm	14' 0" 4267mm	16' 0" 4876mm	16' 0" 4876mm	18' 4" 5588mm	18' 9" 5715mm	20' 9" 6324mm
Body length	10' 5" 3175mm	12' 5" 3784mm	14' 8" 4470mm	17' 0" 5181mm	9' 8" 2946mm	10' 10" 3302mm	12' 10" 3911mm	12' 10" 3911mm	15' 1" 4597mm	15' 7" 4750mm	17' 6" 5334mm
Body width	6' 11" 2108mm	6' 11" 2108mm	6' 11" 2108mm	6' 11" 2108mm	6' 11" 2108mm	6' 11" 2108mm	6' 11" 2108mm	6' 11" 2108mm	6' 11" 2108mm	6' 11" 2108mm	7' 3" 2210mm
Overall height	7' 9" 2362mm	7' 10" 2388mm	7' 10" 2388mm	8' 0" 2438mm	7' 6" 2285mm	7' 10" 2388mm	7' 11" 2413mm	7' 11" 2413mm	7' 11" 2413mm	7' 11" 2413mm	8' 1" 2464mm
Delivered Weight (Tolerance 3%) (kg-cwts)	550 kgs. 10.75 cwt.	620 kgs. 12 cwt.	700 kgs. 13.75 cwt.	820 kgs. 16 cwt.	530 kgs. 10.5 cwt.	610 kgs. 12 cwt.	680 kgs. 13.25 cwt.	680 kgs. 13.25 cwt.	740 kgs. 14.5 cwt.	820 kgs. 16 cwt.	965 kgs. 19 cwt.
Maximum authorized gross weight (kg-cwts)	800 kgs. 15.75 cwt.	888 kgs. 17.25 cwt.	1030 kgs. 20.25 cwt.	1100 kgs. 21.5 cwt.	700 kgs. 13.75 cwt.	800 kgs. 15.75 cwt.	888 kgs. 17.25 cwt.	888 kgs. 17.25 cwt.	990 kgs. 19.5 cwt.	1100 kgs. 21.5 cwt.	1265 kgs. 25 cwt.
Radial ply tyre & rim size	155 SR 13 LP 1207	155 SR 13 LP 1207	155 SR 13(R) LP 1207	185 SR 13 LP 1207	155 SR 13 LP 1207	155 SR 13 LP 1207	155 SR 13 LP 1207	155 SR 13 LP 1207	155 SR 13(R) LP 1207	185 SR 13 LP 1207	185 SR 14(R) LP 993
Tyre pressure	31 P.S.I.	31 P.S.I.	31 P.S.I.	33 P.S.I.	31 P.S.I.	31 P.S.I.	31 P.S.I.	31 P.S.I.	31 P.S.I.	33 P.S.I.	42 P.S.I.
Recommended nose weight (without cylinders) lbs.	80 lbs.- 100 lbs.	110 lbs.- 140 lbs.	110 lbs.- 140 lbs.	120 lbs.- 150 lbs.	80 lbs.- 90 lbs.	80 lbs.- 90 lbs.	110 lbs.- 140 lbs.	100 lbs.- 120 lbs.	100 lbs.- 120 lbs.	125 lbs.- 150 lbs.	150 lbs.- 180 lbs.
Tow Ball height (middle of ball, car laden)	14"	14"	14"	13"	14"	13"	13"	13"	14"	14"	14"





Thomsons (Garron) Ltd,
Garron, Falkirk, Scotland.
Phone: Larbert (03245) 2202.
Cables: Caravans, Falkirk.



The following Table outlines the complete range of Factory Fitted Optional Extras which can be installed only during course of production at the Prices shown (All prices include VAT).

Model	Flued heater and Thermostat	Oven Only	1 cu. ft. 'Fridge (gas/12 volt)	2 Cu ft. 'Fridge (gas /12 volt mains)	Chest of Drawers	Pullman Bunk	5th Berth	Extra Table
Weight	20 lbs.	28.5 lbs.	44 lbs.	61 lbs.	28 lbs.	29 lbs.	27 lbs.	5.5 lbs.
CLAN 1000	—	£49.68	£135.00	—	—	—	—	S
CLAN 1200	—	£49.68	£135.00	—	—	—	—	—
CLAN 1400	—	£49.68	£135.00	—	—	£49.95	—	—
CLAN 1600	—	£49.68	£135.00	—	—	—	£43.70	£10.12
MINI GLEN	—	£49.68	£135.00	£163.13	—	—	—	—
GLEN 2	—	£49.68	£135.00	—	S	—	—	—
GLENDALE	£178.20	£49.68	£135.00	£163.13	S	—	—	—
GLENNEVIS	£178.20	£49.68	£135.00	—	£33.75	—	£43.70	£10.12
GLENELG	£178.20	£49.68	£135.00	£163.13	£33.75	—	£43.70	£10.12
GLENALMOND	£178.20	£49.68	£135.00	£163.13	S	£49.95	—	S
GLENEAGLE	£178.20	S	£135.00	£163.13	S	£49.95	—	S

"S" FITTED AS STANDARD

N.B.—Carrying Capacity will be reduced by the weight of Optional Extras fitted.

Additionally: Occasional Squab Cushions and Scatter Cushions matching upholstery and curtains respectively are available from your Dealer.

Thomson **T-LINE** Caravans

PRICE LIST

SEASON 1978

	MODEL	LENGTH	BERTHS	DELIVERED WEIGHT	MAXIMUM GROSS WEIGHT	CARRYING CAPACITY	RETAIL PRICE EX-WORKS INCLUDING VAT
CLAN	CLAN 1000	10' 5"	4	10¾ cwts	15¾ cwts	5 cwts	£1,330.32
	CLAN 1200	12' 5"	5	12 cwts	17¾ cwts	5¾ cwts	£1,503.26
	CLAN 1400	14' 8"	5(7)	13¾ cwts	20¾ cwts	6½ cwts	£1,671.45
	CLAN 1600	17' 0"	5(6)	16 cwts	21½ cwts	5½ cwts	£1,839.63
GLEN	MINI GLEN	9' 8"	2	10½ cwts	13¾ cwts	3¾ cwts	£1,489.31
	GLEN 2	10' 10"	2	12 cwts	15¾ cwts	3¾ cwts	£1,611.48
	GLENDALE	12' 10"	2	13¾ cwts	17¾ cwts	4 cwts	£1,729.34
	GLENNEVIS	12' 10"	4(5)	13¾ cwts	17¾ cwts	4 cwts	£1,760.81
	GLENELG	15' 1"	4(5)	14½ cwts	19½ cwts	5 cwts	£1,845.06
	GLENALMOND	15' 7"	4(5)	16 cwts	21½ cwts	5½ cwts	£2,007.51
	GLENEAGLE	17' 6"	4(6)	19 cwts	25 cwts	6 cwts	£2,322.06

THIS PRICE LIST SUPERSEDES PREVIOUS LISTS AND IS CORRECT AT 1st SEPTEMBER, 1977

Thomsons (Carron) Limited

CARRON : FALKIRK : SCOTLAND FK28ED

Telephone : Larbert (03245) 2202