



STRATHEARN

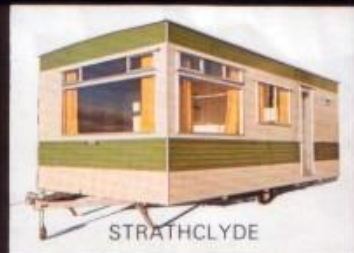
Thomson **T-LINE** Holiday Homes



STRATHALLAN



STRATHDEE



STRATHCLYDE

T-LINE

Strathdee



The largest of the T-Line range, the Strathdee is the Holiday Home which provides a sense of luxury living for leisure hours. The walls in the daytime areas are panelled in high quality decorative timber pattern plywood and in the lounge the floor is fully carpeted. The picture window feature of the smaller models is repeated in the Strathdee so that the occupants can enjoy the delights of the countryside, mountains or seascapes surrounding their chosen spot.

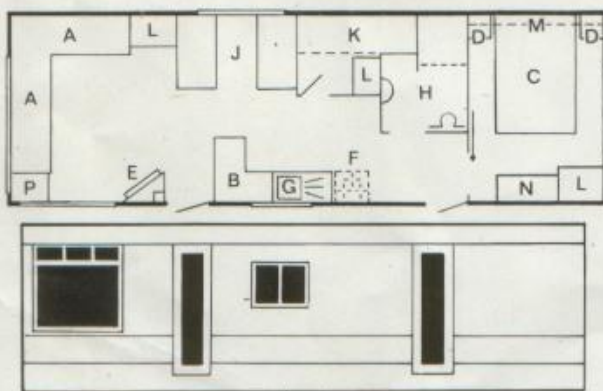
Located centrally the kitchen area is equipped with domestic type, king size stainless steel sink and drainer unit and high and low level storage cupboards. A domestic type oven/cooker with automatic lighting is installed and the floor of the kitchen area is covered in cushioned, hard-wearing vinyl.

The layout provides master bedroom with island-type divan bed, a separate twin bunk room for the kiddies. A four seat dinette convertible to double bed complete the line up before entering the lounge area at the forward end.



A domestic style radiant gas heater with flame failure device is installed in the lounge and there is a hot and cold water system to supply kitchen requirements and the toilet room facilities when fitted.

Two access doors are provided and like most other T-Line Holiday Homes, the Strathdee has a ceiling height of nearly seven feet. The kind of space more usually found in residential caravans.



- | | |
|-------------------------------|------------------------------------|
| A Single Bed | H Toilet/Shower Compartment |
| B Shelved Cupboard | J Dinette/Double Bed |
| C Double Bed | K Twin Bunks |
| D Bedside Units | L Wardrobe |
| E Heater | M Roof Lockers |
| F Cooker | N Vanity with Drawers |
| G Stainless Steel Sink | P Drawer Unit |

SHIPPING DIMENSIONS

Overall Body Length	Overall Length	Overall Width	Overall Height
30' - 4"	33' - 7"	9' - 10 1/4"	9' - 8"
9.25 m	10.24 m	3.018 m	2.95 m

T-LINE

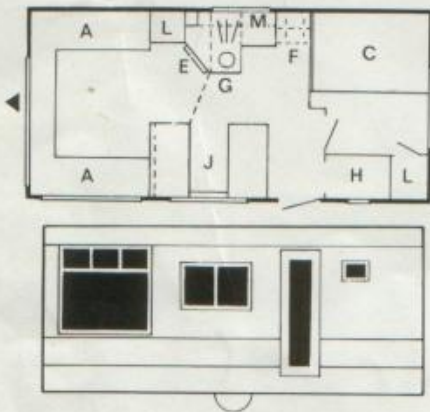
Strathclyde



Smallest of the T-Line range of Holiday Homes, the Strathclyde offers sleeping accommodation for six. The open plan lounge layout provides a spacious daytime area with all round U-plan seating convertible to two single beds. A flued radiant gas heater with flame failure device is installed together with storage cabinets and wardrobe. The floor is fully carpeted.

Separated by a room divider the dinette/kitchen area is equipped with oven/cooker, stainless steel sink/drainage board and space for a 'fridge. All work surfaces are covered in 'wipe clean' melamine and both high and low level cupboards are installed.

Adjacent to the kitchen area is the 4-seater dinette which converts to a double bed and in this area the floor covering is with a tough decorative vinyl. To complete the comfort of the Strathclyde, the master bedroom is located at the rear, separated from the daytime area and comprises large double divan bed with interior spring mattress and a roomy wardrobe.



- A** Single Bed
- C** Double Bed
- E** Heater
- F** Cooker
- G** Stainless Steel Sink
- H** Toilet Compartment
- J** Dinette/Double Bed
- L** Wardrobe
- M** Roof Lockers

SHIPPING DIMENSIONS

Overall Body Length	Overall Length	Overall Width	Overall Height
20' - 4"	23' - 7"	9' - 10 1/4"	9' - 8"
6.2 m	7.19 m	3.018 m	2.95 m

T-LINE

Strathallan

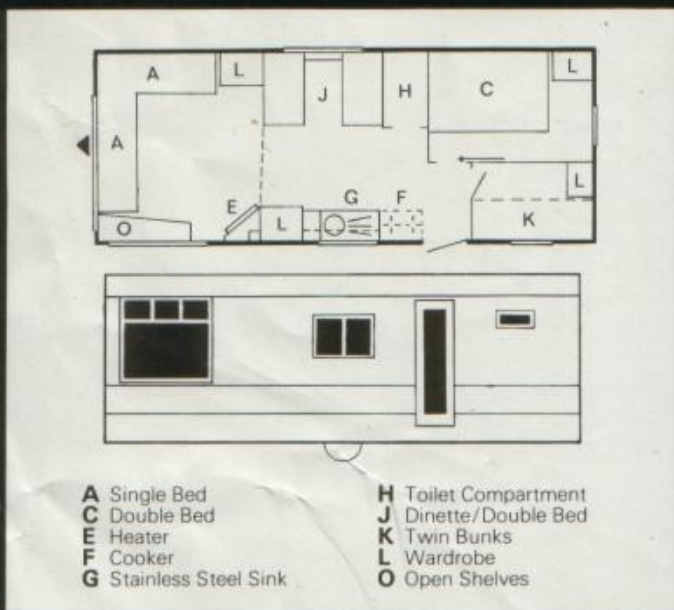


The interior of the Strathallan reflects the high quality of finish and design found throughout the T-Line range of Holiday Homes. For the family wishing sleeping quarters separated from the daytime areas, the large master bedroom and the children's twin-bunk room must appeal. And yet there is still room for more. The dinette converts to a double bed and yet two more can be accommodated on the daytime lounge settees. Even with such lavish sleeping accommodation there is still room for a spacious lounge with L-plan seating, the walls panelled in a 'wipe clean' decorative woodgrain, a radiant flued gas heater and storage cupboards and wardrobe. An important feature for a Holiday Home is window area and the Strathallan is not failing in this respect. All the front and side walls are almost totally taken up by large picture windows affording the occupants the opportunity to enjoy the surroundings of their chosen site.

The dinette and kitchen area is located centrally equipped with oven/cooker, domestic size stainless steel sink and drainer, fridge space, roof lockers and low level cupboards. In this area the floor is covered with a hard-wearing decorative vinyl.

But the versatility of the Strathallan is not yet complete.

A utility room lies between the master bedroom and the dinette—spacious storage indeed for holiday gear, as a larder and even big enough to be a toilet/vanity compartment.



SHIPPING DIMENSIONS

Overall Body Length	Overall Length	Overall Width	Overall Height
25' - 4"	28' - 7"	9' - 10 3/4"	9' - 8"
7.7 m	8.7 m	3.018 m	2.95 m

T-LINE

Strathearn

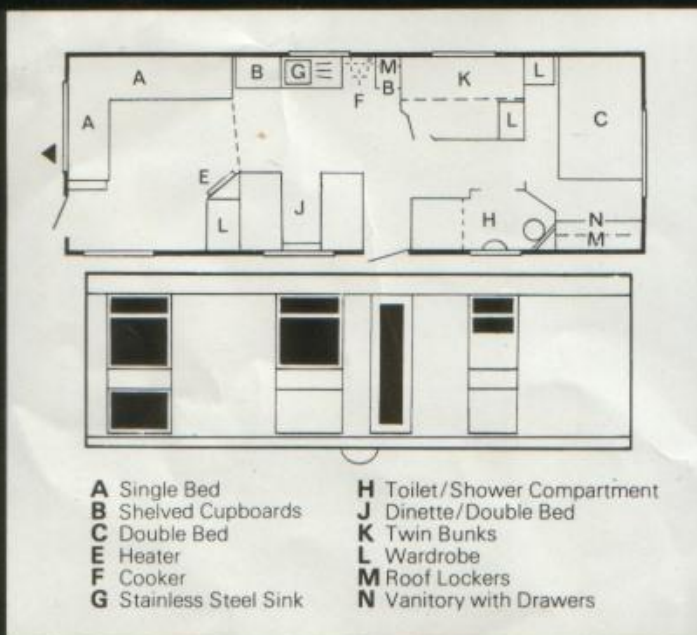


Newcomer to the T-Line range is the Strathearn offering the same basic convenience and facilities of its big brother although two feet shorter than the Strathdee.

The lounge is equipped and finished to the same generous standard of the other models but has the unique feature of an entrance door at the nearside front corner. Whilst still providing sleeping accommodation for two, the daytime use of the lounge is not restricted. The radiant gas heater is mounted as a feature fireplace which separates the dinette from the lounge. Kitchen and dinette occupy the centre area yet the open plan spaciousness of the layout is evident although the master bedroom, children's room and toilet room are completely separate.

The high specification of kitchen equipment is retained in the Strathearn – hot and cold water supply, king size stainless steel sink and domestic type gas cooker.

The rear master bedroom incorporates vanity unit, high level lockers and a capacious wardrobe with drawers below. The divan type double bed with interior spring mattress is offset from the centre to provide adequate room for dressing. Adjacent is the twin bunk room and with the dinette and lounge settees, eight people can be comfortably accommodated.



SHIPPING DIMENSIONS

Overall Body Length	Overall Length	Overall Width	Overall Height
28' - 4"	31' - 7"	9' - 10 3/4"	9' - 8"
8.64 m	9.63 m	3.018 m	2.95 m

Thomson



Holiday Homes

There are Holiday Homes and Holiday Homes but we think ours are rather special. Built in a modern factory with the backing of nearly 70 years experience of caravan construction, technique and knowhow. Every unit is built on a full frame steel chassis equipped with slave wheels for ease of movement and corner steady legs for stability when sited. The roof end and wall cavities are packed with textile wool an insulant seen to be superior to many other types of insulation used in caravan construction. The external cladding is in pre-painted acrylic finish aluminium sheeting.

The issue of this brochure does not constitute an offer and sales are conditional upon terms of business and express warranty issued by the makers of the caravans.

While the information contained in this brochure is correct at time of printing it may be that, on account of the use of alternative materials or the shortage of supplies, alterations may have to be made to the caravans described in this brochure. Diagram and detailed specifications of each caravan are not to scale. Particulars of any changes may be obtained from the manufacturer.



**THOMSON T-LINE (HOMES) LTD
CARRON FALKIRK SCOTLAND
PHONE: LARBERT (03245) 6231/3
CABLES: CARAVANS, FALKIRK**

DEALER

